

Datasheet for ABIN2616091
anti-AMY1A antibody (AA 16-511)[Go to Product page](#)

1 Image

Overview

Quantity:	50 µg
Target:	AMY1A
Binding Specificity:	AA 16-511
Reactivity:	Mouse
Host:	Rabbit
Clonality:	Polyclonal
Conjugate:	This AMY1A antibody is un-conjugated
Application:	ELISA

Product Details

Immunogen:	Recombinant AMY1 (Gln16-Ile511) expressed in E. coli. ImmunogenType: Recombinant protein
Isotype:	IgG
Specificity:	Mouse AMY1A / Salivary Amylase
Cross-Reactivity:	Human
Purification:	Affinity purified

Target Details

Target:	AMY1A
Alternative Name:	AMY1A / Salivary Amylase (AMY1A Products)

Target Details

Background: Synonyms: AMY1A, Alpha-amylase 1, Glycogenase, AMY1, Amylase, alpha 1A (salivary), Amylase, alpha 1A salivary, Amylase, salivary, alpha-1A, Salivary amylase alpha 1A, Salivary alpha-amylase, Salivary Amylase

Gene ID: 276

Application Details

Application Notes: ELISA (1:100 - 1:200), IHC-P (1:50), WB (1:100 - 1:400),

Restrictions: For Research Use only

Handling

Concentration: Lot specific

Buffer: PBS, pH 7.4, 0.02 % sodium azide, 50 % glycerol.

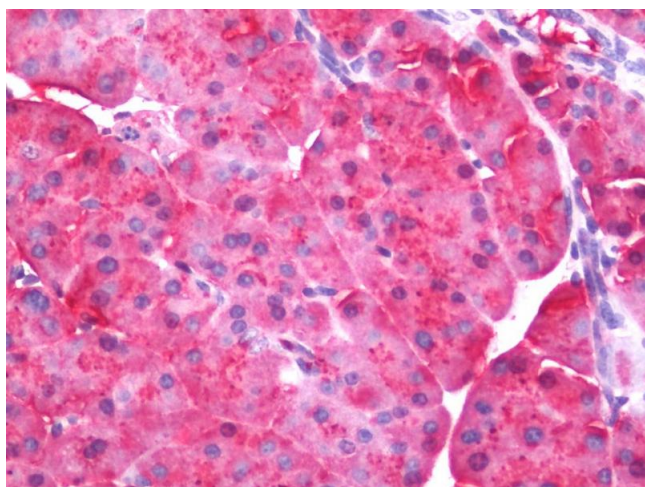
Preservative: Sodium azide

Precaution of Use: This product contains Sodium azide: a POISONOUS AND HAZARDOUS SUBSTANCE which should be handled by trained staff only.

Storage: 4 °C

Storage Comment: Store frozen product at or below -20°C. Thawed product may be stored for 2-4 weeks at 4°C. For optimal storage, aliquot to smaller portions and store at -20°C to -70°C. Avoid repeated freeze/thaw cycles.

Images



Immunohistochemistry

Image 1. Human Pancreas: Formalin-Fixed, Paraffin-Embedded (FFPE). This image was taken for the unconjugated form of this product. Other forms have not been tested.