



[Go to Product page](#)

Datasheet for ABIN2616255
anti-ANGPTL3 antibody (AA 43-92)

1 Image

Overview

| | |
|----------------------|--|
| Quantity: | 50 µg |
| Target: | ANGPTL3 |
| Binding Specificity: | AA 43-92 |
| Reactivity: | Human, Mouse, Rat, Cow, Pig, Horse, Dog, Rabbit, Bat, Chicken, Monkey, Xenopus laevis |
| Host: | Rabbit |
| Clonality: | Polyclonal |
| Conjugate: | This ANGPTL3 antibody is un-conjugated |
| Application: | Western Blotting (WB), Immunohistochemistry (IHC), Immunohistochemistry (Paraffin-embedded Sections) (IHC (p)) |

Product Details

| | |
|---------------|---|
| Brand: | IHC-plus™ |
| Immunogen: | Synthetic peptide located between aa43-92 of human ANGPTL3 (Q9Y5C1, NP_055310). Percent identity by BLAST analysis: Human, Chimpanzee, Gorilla, Gibbon, Galago, Marmoset, Mouse, Rat, Elephant, Panda, Dog, Bovine, Bat, Rabbit, Horse, Pig, Turkey, Chicken, Xenopus (100%), Opossum (92%). Type of Immunogen: Synthetic peptide |
| Specificity: | Human ANGPTL3 |
| Purification: | Immunoaffinity purified |

Target Details

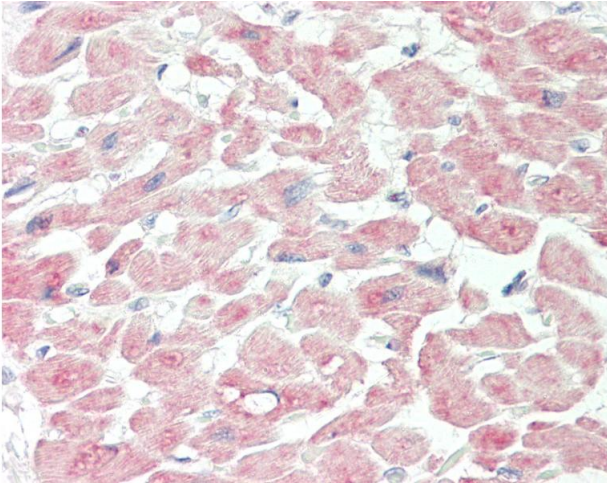
| | |
|-------------------|--|
| Target: | ANGPTL3 |
| Alternative Name: | ANGPTL3 (ANGPTL3 Products) |
| Background: | Name/Gene ID: ANGPTL3 Synonyms: ANGPTL3, ANGPT5, ANG-5, Angiotensin-converting enzyme 2, Angiotensin-converting enzyme 2-related protein 3, FHBL2, Angiotensin-converting enzyme 2, Angiotensin-converting enzyme 2-related protein 3 |
| Gene ID: | 27329 |
| NCBI Accession: | NP_055310 |

Application Details

| | |
|--------------------|---|
| Application Notes: | Approved: IHC, IHC-P (15 µg/mL), WB (0.2 - 1 µg/mL) Usage: Western Blot: Suggested dilution at 1 µg/mL in 5 % skim milk / PBS buffer, and HRP conjugated anti-Rabbit IgG should be diluted in 1: 50,000 - 100,000 as secondary antibody. |
| Comment: | Target Species of Antibody: Human |
| Restrictions: | For Research Use only |

Handling

| | |
|------------------|---|
| Format: | Lyophilized |
| Reconstitution: | Distilled water |
| Concentration: | Lot specific |
| Buffer: | Lyophilized from PBS with 2 % sucrose |
| Handling Advice: | Avoid repeat freeze-thaw cycles. |
| Storage: | 4 °C, -20 °C |
| Storage Comment: | Long term: -20°C, the use of 50% glycerol is recommended if storing aliquots in -20°C for long term use (up to 1 year) Short term (less than 1 week): 4°C. Avoid freeze-thaw cycles. |



Immunohistochemistry

Image 1. Human Heart: Formalin-Fixed, Paraffin-Embedded (FFPE). This image was taken for the unconjugated form of this product. Other forms have not been tested.