



Datasheet for ABIN2616696
anti-AP1S3 antibody (Biotin)



[Go to Product page](#)

1 Image

Overview

Quantity:	100 µg
Target:	AP1S3
Reactivity:	Human
Host:	Rabbit
Clonality:	Polyclonal
Conjugate:	This AP1S3 antibody is conjugated to Biotin
Application:	ELISA, Immunohistochemistry (IHC), Western Blotting (WB), Immunohistochemistry (Paraffin-embedded Sections) (IHC (p))

Product Details

Immunogen:	Recombinant human AP-1 complex subunit sigma-3 protein. Type of Immunogen: Recombinant protein
Isotype:	IgG
Specificity:	Human AP1S3
Purification:	Caprylic acid and ammonium sulfate precipitation

Target Details

Target:	AP1S3
Alternative Name:	AP1S3 (AP1S3 Products)
Background:	Name/Gene ID: AP1S3

Target Details

Synonyms: AP1S3, AP-1 complex subunit sigma-3, Sigma1C-adaptin, Sigma 1C adaptin, Sigma-adaptin 1C

Gene ID: 130340

Application Details

Application Notes: Approved: ELISA, IHC, IHC-P, WB

Usage: The applications listed have been tested for the unconjugated form of this product. Other forms have not been tested.

Comment: Target Species of Antibody: Human

Restrictions: For Research Use only

Handling

Format: Liquid

Concentration: Lot specific

Buffer: PBS, pH 7.4, 0.03 % Proclin 300, 50 % glycerol.

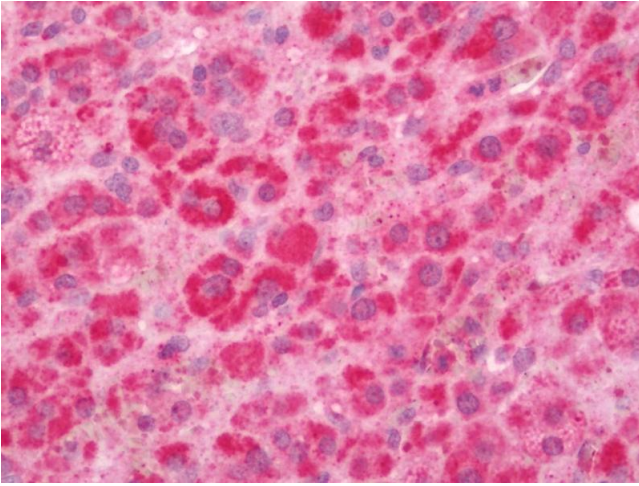
Preservative: ProClin

Precaution of Use: This product contains ProClin: a POISONOUS AND HAZARDOUS SUBSTANCE which should be handled by trained staff only.

Handling Advice: Avoid freeze-thaw cycles.

Storage: -20 °C, -80 °C

Storage Comment: Aliquot and store at -20°C or -80°C. Avoid freeze-thaw cycles.



Immunohistochemistry (Paraffin-embedded Sections)

Image 1. Human Adrenal: Formalin-Fixed, Paraffin-Embedded (FFPE). This image was taken for the unconjugated form of this product. Other forms have not been tested.