



[Go to Product page](#)

Datasheet for ABIN2617742
anti-MKL1 antibody (AA 700-750)

1 Image

Overview

Quantity:	50 µL
Target:	MKL1
Binding Specificity:	AA 700-750
Reactivity:	Human
Host:	Rabbit
Clonality:	Polyclonal
Conjugate:	This MKL1 antibody is un-conjugated
Application:	Immunohistochemistry (IHC), Immunofluorescence (IF), Immunohistochemistry (Paraffin-embedded Sections) (IHC (p))

Product Details

Brand:	IHC-plus™
Isotype:	IgG
Specificity:	Region between residue 700 and 750 of human megakaryoblastic leukemia (translocation) 1 using the numbering given in entry NP_065882.1 (GeneID 57591).
Purification:	Immunoaffinity purified

Target Details

Target:	MKL1
Alternative Name:	BSAC / MKL1 (MKL1 Products)

Target Details

Background: Name/Gene ID: MKL1

Synonyms: MKL1, AMKL, KIAA1438, MKL/myocardin-like protein 1, MRTF-A, BSAC

Gene ID: 57591

Application Details

Application Notes: Approved: IF (1:50 - 1:500), IHC, IHC-P (1:100)

Usage: Immunohistochemistry: Antigen retrieval is recommended. Antigen retrieval with citrate buffer will enhance staining. Likely to work with frozen sections. In some cases, the antibody may be diluted further than indicated. Human controls: Breast Carcinoma, Prostate Carcinoma, Skin Basal Cell Carcinoma.

Comment: Target Species of Antibody: Human

Restrictions: For Research Use only

Handling

Format: Liquid

Concentration: Lot specific

Buffer: Tris-buffered saline, 0.1 % BSA, 0.09 % sodium azide.

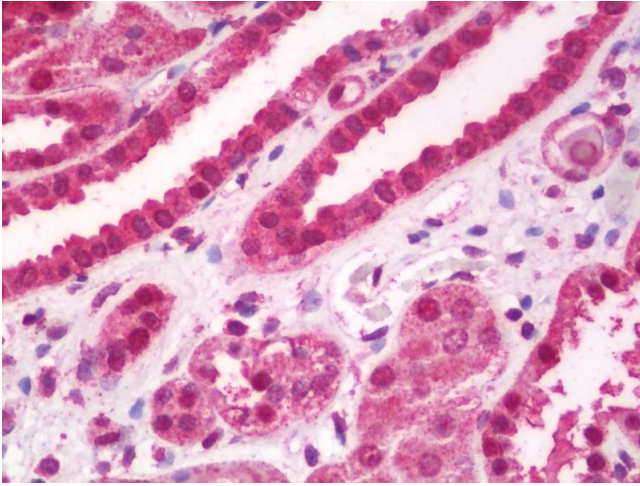
Preservative: Sodium azide

Precaution of Use: This product contains Sodium azide: a POISONOUS AND HAZARDOUS SUBSTANCE which should be handled by trained staff only.

Storage: 4 °C

Storage Comment: Store at 2-8°C for up to 1 year.

Expiry Date: 12 months



Immunohistochemistry

Image 1. Anti-BSAC / MKL1 antibody IHC staining of human kidney. Immunohistochemistry of formalin-fixed, paraffin-embedded tissue after heat-induced antigen retrieval. Antibody dilution 1:100.