



[Go to Product page](#)

Datasheet for ABIN2617743
anti-BCLAF1 antibody (AA 150-200)

1 Image

Overview

Quantity:	50 µL
Target:	BCLAF1
Binding Specificity:	AA 150-200
Reactivity:	Human
Host:	Rabbit
Clonality:	Polyclonal
Application:	Immunohistochemistry (IHC), Immunohistochemistry (Paraffin-embedded Sections) (IHC (p)), Immunofluorescence (IF)

Product Details

Brand:	IHC-plus™
Isotype:	IgG
Specificity:	Region between residue 150 and 200 of human BCL2 Associated Transcription Factor 1 using the numbering given in entry NP_055554.1 (GeneID 9774).
Purification:	Immunoaffinity purified

Target Details

Target:	BCLAF1
Alternative Name:	BTF / BCLAF1 (BCLAF1 Products)
Background:	Name/Gene ID: BCLAF1 Family: Apoptosis

Target Details

Synonyms: BCLAF1, BK211L9.1, BTF, KIAA0164

Gene ID: 9774

Pathways: [Positive Regulation of Response to DNA Damage Stimulus](#)

Application Details

Application Notes: Approved: IF (1:50 - 1:500), IHC, IHC-P (1:100)

Usage: Immunohistochemistry: Antigen retrieval is recommended. Antigen retrieval with citrate buffer will enhance staining. Likely to work with frozen sections. In some cases, the antibody may be diluted further than indicated. Human controls: Breast Carcinoma, Colon Carcinoma, Laryngeal Squamous Cell Carcinoma, Linitis Plastica Stomach Cancer, Lung Adenocarcinoma, Non-Small Cell Lung Cancer, Ovarian Carcinoma, Pancreatic Islet Cell Tumor, Prostate Carcinoma, Skin Basal Cell Carcinoma, Stomach Adenocarcinoma.

Comment: Target Species of Antibody: Human

Restrictions: For Research Use only

Handling

Format: Liquid

Concentration: Lot specific

Buffer: Tris-buffered saline, 0.1 % BSA, 0.09 % sodium azide.

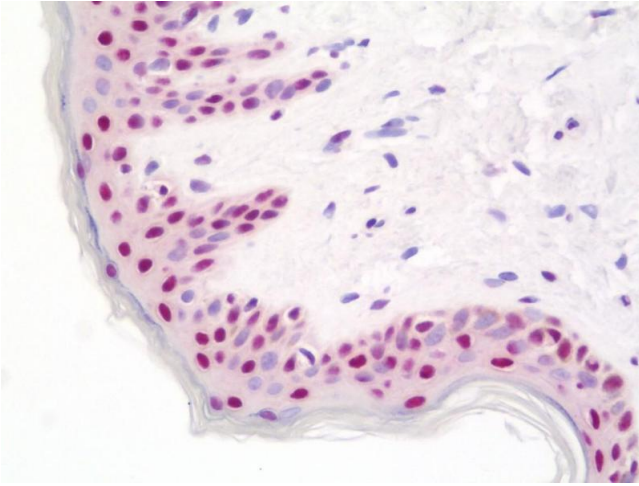
Preservative: Sodium azide

Precaution of Use: This product contains Sodium azide: a POISONOUS AND HAZARDOUS SUBSTANCE which should be handled by trained staff only.

Storage: 4 °C

Storage Comment: Store at 2-8°C for up to 1 year.

Expiry Date: 12 months



Immunohistochemistry

Image 1. Anti-BTF / BCLAF1 antibody IHC staining of human skin. Immunohistochemistry of formalin-fixed, paraffin-embedded tissue after heat-induced antigen retrieval. Antibody dilution 1:100.