

Datasheet for ABIN2617833  
**anti-CAD antibody (AA 1650-1700)**[Go to Product page](#)

## 1 Image

## Overview

Quantity:	50 µL
Target:	CAD
Binding Specificity:	AA 1650-1700
Reactivity:	Human
Host:	Rabbit
Clonality:	Polyclonal
Conjugate:	This CAD antibody is un-conjugated
Application:	Immunohistochemistry (IHC), Immunohistochemistry (Paraffin-embedded Sections) (IHC (p)), Immunofluorescence (IF)

## Product Details

Brand:	IHC-plus™
Isotype:	IgG
Specificity:	Region between residue 1650 and 1700 of human carbamoyl-phosphate synthetase 2, aspartate transcarbamylase, and dihydroorotase using the numbering given in entry NP_004332.2 (GeneID 790).
Purification:	Immunoaffinity purified

## Target Details

Target:	CAD
Alternative Name:	CAD ( <a href="#">CAD Products</a> )

## Target Details

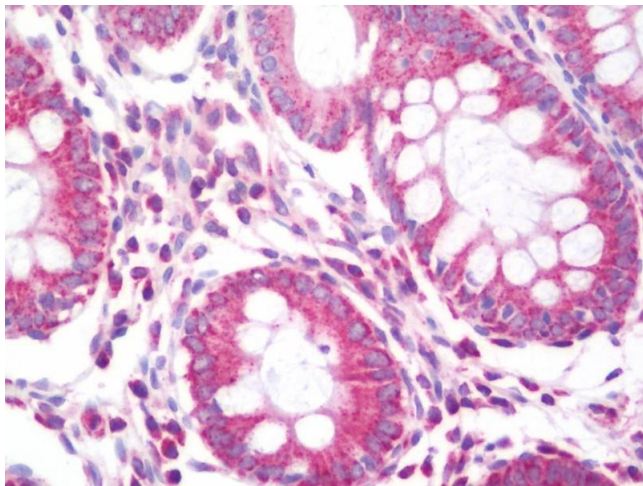
Background:	Name/Gene ID: CAD
	Subfamily: Metallopeptidase M38
	Family: Protease
	Synonyms: CAD, CAD trifunctional protein, DFF-40, DFF40, CAD protein, CPAN, DFF2
Gene ID:	790
Pathways:	<a href="#">Production of Molecular Mediator of Immune Response</a> , <a href="#">Ribonucleoside Biosynthetic Process</a>

## Application Details

Application Notes:	Approved: IF (1:50 - 1:500), IHC, IHC-P (1:100)
	Usage: Immunohistochemistry: Antigen retrieval is recommended. Antigen retrieval with citrate buffer will enhance staining. Likely to work with frozen sections. In some cases, the antibody may be diluted further than indicated. Human controls: Breast Carcinoma, Colon Carcinoma, Linitis Plastica Stomach Cancer, Ovarian Carcinoma, Stomach Adenocarcinoma, Testicular Seminoma.
Comment:	Target Species of Antibody: Human
Restrictions:	For Research Use only

## Handling

Format:	Liquid
Concentration:	Lot specific
Buffer:	Tris-buffered saline, 0.1 % BSA, 0.09 % sodium azide.
Preservative:	Sodium azide
Precaution of Use:	This product contains Sodium azide: a POISONOUS AND HAZARDOUS SUBSTANCE which should be handled by trained staff only.
Storage:	4 °C
Storage Comment:	Store at 2-8°C for up to 1 year.
Expiry Date:	12 months



#### Immunohistochemistry

**Image 1.** Anti-CAD antibody IHC staining of human colon. Immunohistochemistry of formalin-fixed, paraffin-embedded tissue after heat-induced antigen retrieval. Antibody dilution 1:100.