



Datasheet for ABIN2618101
anti-CCL15 antibody (AA 22-113) (Biotin)



[Go to Product page](#)

1 Image

Overview

| | |
|----------------------|---|
| Quantity: | 100 µL |
| Target: | CCL15 |
| Binding Specificity: | AA 22-113 |
| Reactivity: | Human |
| Host: | Rabbit |
| Clonality: | Polyclonal |
| Conjugate: | This CCL15 antibody is conjugated to Biotin |
| Application: | Western Blotting (WB) |

Product Details

| | |
|---------------|--|
| Immunogen: | Recombinant CCL15 (Gln22-Ile113) expressed in E. coli. Type of Immunogen: Recombinant protein |
| Isotype: | IgG |
| Specificity: | Human CCL15 / MIP5 |
| Purification: | Affinity purified |

Target Details

| | |
|-------------------|---|
| Target: | CCL15 |
| Alternative Name: | CCL15 / MIP5 (CCL15 Products) |

Target Details

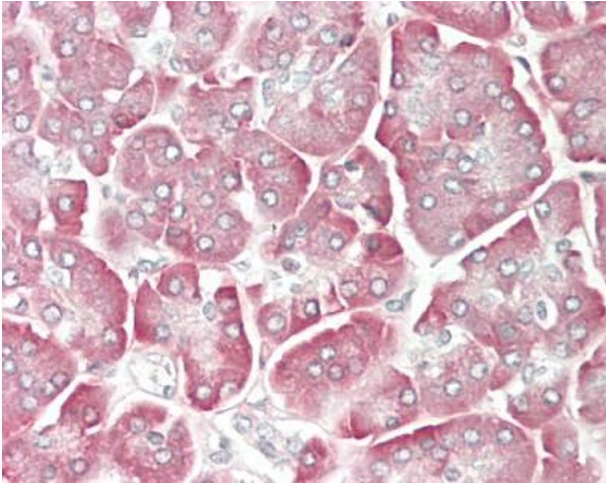
| | |
|-------------|--|
| Background: | Name/Gene ID: CCL15 Subfamily: Interchrine beta Family: Interchrine Synonyms: CCL15, C-C motif chemokine 15, Chemokine hcc2, HMRP-2B, Leukotactin-1, LKN1, MIP-5, MIP5, MRP-2B, Leukotactin1, Small-inducible cytokine A15, MIP-1D, NCC3, New CC chemokine 3, SY15, Chemokine CC-2, HCC-2, Leukotactin 1, LKN-1, MIP-1 delta, NCC-3, SCYA15 |
| Gene ID: | 6359 |

Application Details

| | |
|--------------------|--|
| Application Notes: | Approved: WB (1:100 - 1:400) Usage: The applications listed have been tested for the unconjugated form of this product. Other forms have not been tested. |
| Comment: | Target Species of Antibody: Human |
| Restrictions: | For Research Use only |

Handling

| | |
|--------------------|--|
| Format: | Liquid |
| Concentration: | Lot specific |
| Buffer: | PBS, pH 7.4, 0.02 % sodium azide, 50 % glycerol. |
| Preservative: | Sodium azide |
| Precaution of Use: | This product contains Sodium azide: a POISONOUS AND HAZARDOUS SUBSTANCE which should be handled by trained staff only. |
| Storage: | 4 °C,-20 °C,-80 °C |
| Storage Comment: | Store frozen product at or below -20°C. Thawed product may be stored for 2-4 weeks at 4°C. For optimal storage, aliquot to smaller portions and store at -20°C to -70°C. Avoid freeze-thaw cycles. |



Immunohistochemistry (Paraffin-embedded Sections)

Image 1. Human Pancreas: Formalin-Fixed, Paraffin-Embedded (FFPE). This image was taken for the unconjugated form of this product. Other forms have not been tested.