



[Go to Product page](#)

Datasheet for ABIN2618193

anti-CCL25 antibody (AA 24-150) (Biotin)

1 Image

Overview

Quantity:	100 µL
Target:	CCL25
Binding Specificity:	AA 24-150
Reactivity:	Human
Host:	Rabbit
Clonality:	Polyclonal
Conjugate:	This CCL25 antibody is conjugated to Biotin
Application:	Western Blotting (WB)

Product Details

Immunogen:	Recombinant TECK (Gln24-Leu150) expressed in E. coli.
	Type of Immunogen: Recombinant protein
Isotype:	IgG
Specificity:	Human TECK / CCL25
Purification:	Affinity purified

Target Details

Target:	CCL25
Alternative Name:	CCL25 / TECK (CCL25 Products)

Target Details

Background: Name/Gene ID: CCL25
Subfamily: Intercline beta
Family: Intercline

Synonyms: CCL25, C-C motif chemokine 25, Ck beta-15, TECK, Thymus-expressed chemokine, Small-inducible cytokine A25, TECKvar, Chemokine TECK, Ckb15, SCYA25, Thymus expressed chemokine

Gene ID: 6370

Application Details

Application Notes: Approved: WB (1:100 - 1:400)

Usage: The applications listed have been tested for the unconjugated form of this product. Other forms have not been tested.

Comment: Target Species of Antibody: Human

Restrictions: For Research Use only

Handling

Format: Liquid

Concentration: Lot specific

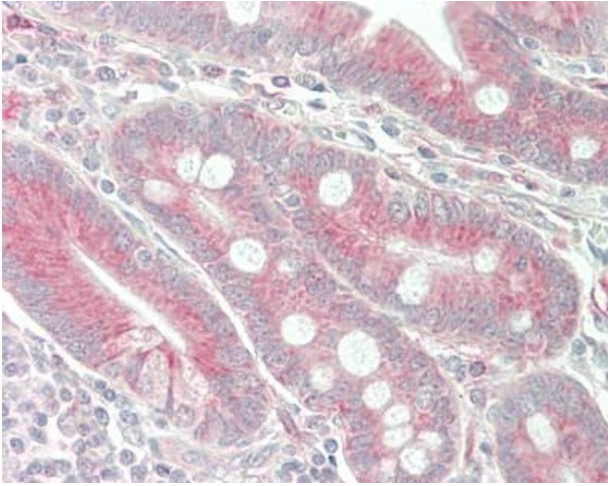
Buffer: PBS, pH 7.4, 0.02 % sodium azide, 50 % glycerol.

Preservative: Sodium azide

Precaution of Use: This product contains Sodium azide: a POISONOUS AND HAZARDOUS SUBSTANCE which should be handled by trained staff only.

Storage: 4 °C,-20 °C,-80 °C

Storage Comment: Store frozen product at or below -20°C. Thawed product may be stored for 2-4 weeks at 4°C. For optimal storage, aliquot to smaller portions and store at -20°C to -70°C. Avoid freeze-thaw cycles.



Immunohistochemistry (Paraffin-embedded Sections)

Image 1. Human Small Intestine: Formalin-Fixed, Paraffin-Embedded (FFPE). This image was taken for the unconjugated form of this product. Other forms have not been tested.