



Datasheet for ABIN2618431
anti-CD200 antibody (AA 175-224)



[Go to Product page](#)

1 Image

Overview

Quantity:	50 µg
Target:	CD200
Binding Specificity:	AA 175-224
Reactivity:	Human, Pig, Dog
Host:	Rabbit
Clonality:	Polyclonal
Conjugate:	This CD200 antibody is un-conjugated
Application:	Western Blotting (WB), Immunohistochemistry (IHC), Immunohistochemistry (Paraffin-embedded Sections) (IHC (p))

Product Details

Brand:	IHC-plus™
Immunogen:	Synthetic peptide located between aa175-224 of human CD200. Percent identity by BLAST analysis: Human, Chimpanzee, Gorilla, Orangutan, Gibbon (100%), Monkey, Bat (92%), Galago, Marmoset, Pig (85%), Mouse, Rat (78%). Type of Immunogen: Synthetic peptide
Specificity:	Human CD200
Purification:	Immunoaffinity purified

Target Details

Target: CD200

Alternative Name: CD200 ([CD200 Products](#))

Background: Name/Gene ID: CD200

Synonyms: CD200, CD200 antigen, CD200 Molecule, MOX1, MOX2, OX-2 membrane glycoprotein, OX-2, MRC, MRC OX-2 antigen

Gene ID: 4345

Application Details

Application Notes: Approved: IHC, IHC-P (10 µg/mL), WB (1 µg/mL)

Comment: Target Species of Antibody: Human

Restrictions: For Research Use only

Handling

Format: Lyophilized

Reconstitution: Distilled water

Concentration: Lot specific

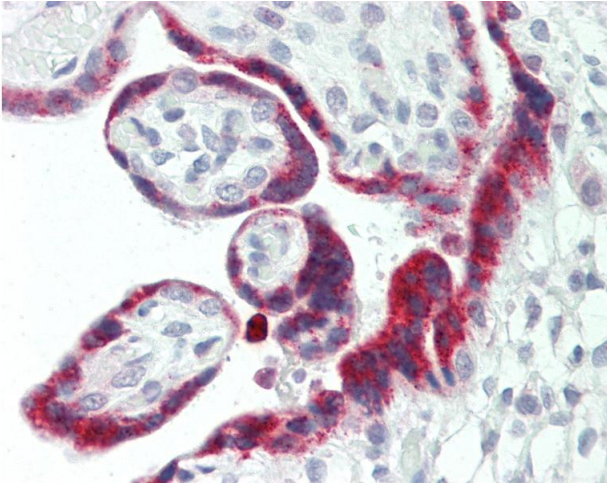
Buffer: Lyophilized from PBS, 2 % sucrose.

Handling Advice: Avoid repeat freeze-thaw cycles.

Storage: 4 °C, -20 °C

Storage Comment: Long term: -20°C, the use of 50% glycerol is recommended if storing aliquots in -20°C for long term use (up to 1 year)

Short term (less than 1 week): 4°C. Avoid freeze-thaw cycles.



Immunohistochemistry

Image 1. Human Placenta: Formalin-Fixed, Paraffin-Embedded (FFPE). This image was taken for the unconjugated form of this product. Other forms have not been tested.