

Datasheet for ABIN2618488
anti-CD36 antibody (AA 99-114)

5 Images

[Go to Product page](#)

Overview

Quantity:	1 each
Target:	CD36
Binding Specificity:	AA 99-114
Reactivity:	Human
Host:	Rabbit
Clonality:	Polyclonal
Application:	Western Blotting (WB), Immunohistochemistry (Paraffin-embedded Sections) (IHC (p))

Product Details

Immunogen:	Human CD36 amino acids 99-114 (AKENVVTQDAEDNTVSF). Percent identity by BLAST analysis: Human (100%), Gorilla, Gibbon, Marmoset (94%), Monkey, Mouse (81%).
Isotype:	IgG
Specificity:	Human CD36 amino acids 99-114 (AKENVVTQDAEDNTVSF)
Cross-Reactivity:	Mouse (Murine)
Predicted Reactivity:	Percent identity by BLAST analysis: Human (100%) Gorilla, Gibbon, Marmoset (94%) Monkey, Mouse (81%).
Purification:	Immunoaffinity Chromatography

Target Details

Target:	CD36
---------	------

Target Details

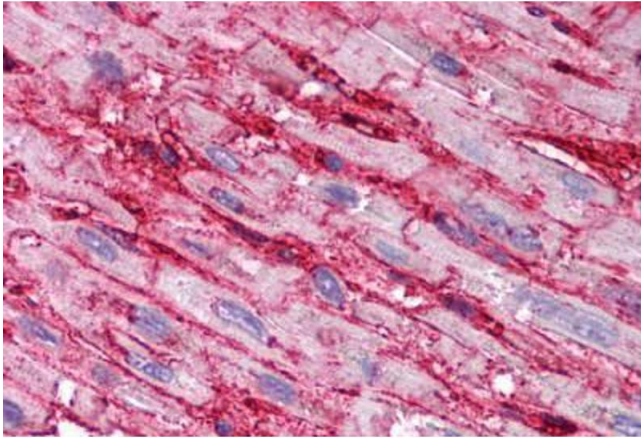
Alternative Name:	CD36 (CD36 Products)
Background:	Standard Gene Symbol: CD36, Synonyms: CD36, Cluster determinant 36, FAT, Fatty acid translocase, Glycoprotein IIIb, gp4, GPIIIB, GPIV, PAS-4 protein, PAS IV, PASIV, Platelet collagen receptor, Platelet glycoprotein IV, SCARB3, Thrombospondin receptor, BDPLT10, CD36 antigen, CHDS7, gp3B, PAS-4, Platelet glycoprotein 4
Gene ID:	948
Pathways:	TLR Signaling , Peptide Hormone Metabolism , Response to Growth Hormone Stimulus , Activation of Innate immune Response , Cellular Response to Molecule of Bacterial Origin , Regulation of Lipid Metabolism by PPARAlpha , Positive Regulation of Immune Effector Process , Production of Molecular Mediator of Immune Response , Hepatitis C , Toll-Like Receptors Cascades , Lipid Metabolism , S100 Proteins

Application Details

Application Notes:	IHC-P (5 µg/mL) Immunohistochemistry: LS-B1590 was validated for use in immunohistochemistry on a panel of 21 formalin-fixed, paraffin-embedded (FFPE) human tissues and a panel of mouse tissues after heat induced antigen retrieval in pH 6.0 citrate buffer. After incubation with the primary antibody, slides were incubated with biotinylated secondary antibody, followed by alkaline phosphatase-streptavidin and chromogen. The stained slides were evaluated by a pathologist to confirm staining specificity. The optimal working concentration for LS-B1590 was determined to be 5 µg/mL.
Restrictions:	For Research Use only

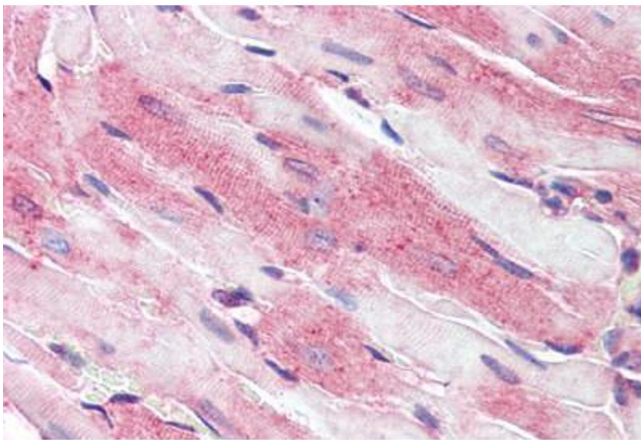
Handling

Concentration:	Lot specific
Buffer:	TBS
Storage:	4 °C/-20 °C
Storage Comment:	Long term: -20°C, Short term: +4°C. .



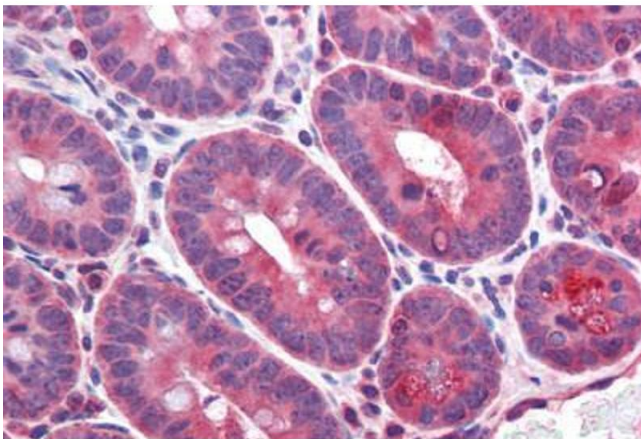
Immunohistochemistry

Image 1. Anti-CD36 antibody IHC staining of human heart. Immunohistochemistry of formalin-fixed, paraffin-embedded tissue after heat-induced antigen retrieval. Antibody ABIN214173 concentration 5 ug/ml.



Immunohistochemistry (Formalin-fixed Paraffin-embedded Sections)

Image 2. Mouse heart: Formalin-Fixed, Paraffin-Embedded (FFPE)



Immunohistochemistry

Image 3. Mouse small intestine: Formalin-Fixed, Paraffin-Embedded (FFPE)

Please check the [product details page](#) for more images. Overall 5 images are available for ABIN2618488.