



[Go to Product page](#)

Datasheet for ABIN2619316
anti-CLPP antibody (AA 215-277)

1 Image

Overview

Quantity:	50 µL
Target:	CLPP
Binding Specificity:	AA 215-277
Reactivity:	Human
Host:	Rabbit
Clonality:	Polyclonal
Conjugate:	This CLPP antibody is un-conjugated
Application:	Western Blotting (WB), Immunohistochemistry (IHC), Immunohistochemistry (Paraffin-embedded Sections) (IHC (p))

Product Details

Brand:	IHC-plus™
Immunogen:	Synthetic peptide corresponding to a region within amino acids 215 and 277 of CLPP (SwissProt Q16740). Type of Immunogen: Synthetic peptide
Isotype:	IgG
Specificity:	Human CLPP
Purification:	Immunoaffinity purified

Target Details

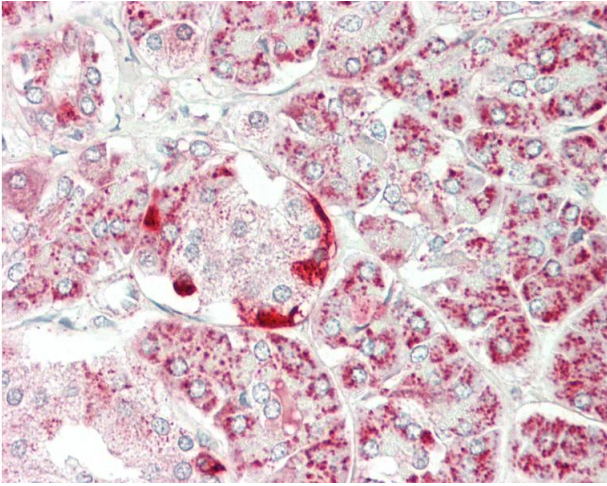
Target:	CLPP
Alternative Name:	CLPP (CLPP Products)
Background:	Name/Gene ID: CLPP Subfamily: Serine S14 Family: Protease Synonyms: CLPP, Endopeptidase Clp
Gene ID:	8192

Application Details

Application Notes:	Approved: IHC, IHC-P (5 µg/mL), WB (1:500 - 1:3000) Usage: IHC-paraffin: Suggested antigen retrieval using heat mediated 10 mM Citrate buffer (pH 6.0) or Tris-EDTA buffer (pH 8.0).
Comment:	Target Species of Antibody: Human
Restrictions:	For Research Use only

Handling

Format:	Liquid
Concentration:	Lot specific
Buffer:	PBS, pH 7.0, 10 % glycerol, 0.01 % Thimerosal
Preservative:	Thimerosal (Merthiolate)
Precaution of Use:	This product contains Thimerosal (Merthiolate): a POISONOUS AND HAZARDOUS SUBSTANCE which should be handled by trained staff only.
Handling Advice:	Avoid multiple freeze-thaw cycles.
Storage:	-20 °C
Storage Comment:	Keep as concentrated solution. Aliquot and store at -20°C or below. Avoid multiple freeze-thaw cycles.



Immunohistochemistry

Image 1. Human Pancreas: Formalin-Fixed, Paraffin-Embedded (FFPE)