

Datasheet for ABIN2619714
anti-CX3CL1 antibody (AA 81-336) (Biotin)



[Go to Product page](#)

1 Image

Overview

Quantity:	100 µL
Target:	CX3CL1
Binding Specificity:	AA 81-336
Reactivity:	Human
Host:	Rabbit
Clonality:	Polyclonal
Conjugate:	This CX3CL1 antibody is conjugated to Biotin
Application:	Western Blotting (WB)

Product Details

Immunogen:	Recombinant CX3CL1 (Trp81-Ala336) expressed in E. coli. Type of Immunogen: Recombinant protein
Isotype:	IgG
Specificity:	Human CX3CL1 / Fractalkine
Purification:	Affinity purified

Target Details

Target:	CX3CL1
Alternative Name:	CX3CL1 / Fractalkine (CX3CL1 Products)

Target Details

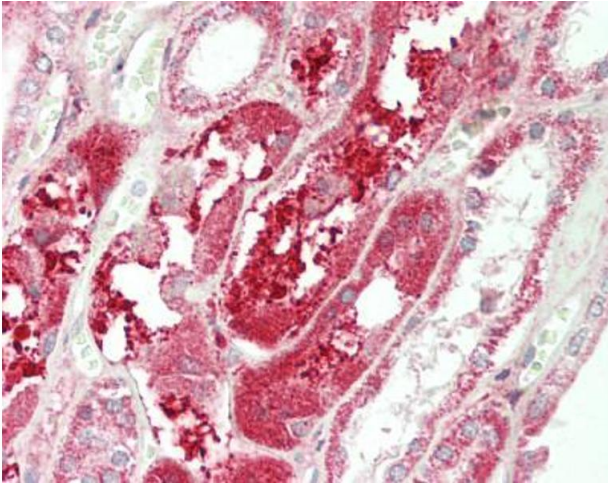
Background:	Name/Gene ID: CX3CL1 Subfamily: Intercrine delta Family: Intercrine Synonyms: CX3CL1, ABCD-3, C-X3-C motif chemokine 1, C3Xkine, Chemokine ntt, CXC3C, FKN, Fractalkine, Neurotactin, CXC3, NTN, SCYD1, Small-inducible cytokine D1
Gene ID:	6376
Pathways:	Synaptic Membrane

Application Details

Application Notes:	Approved: WB Usage: The applications listed have been tested for the unconjugated form of this product. Other forms have not been tested.
Comment:	Target Species of Antibody: Human
Restrictions:	For Research Use only

Handling

Format:	Liquid
Concentration:	Lot specific
Buffer:	PBS, pH 7.4, 0.02 % sodium azide, 50 % glycerol.
Preservative:	Sodium azide
Precaution of Use:	This product contains Sodium azide: a POISONOUS AND HAZARDOUS SUBSTANCE which should be handled by trained staff only.
Storage:	4 °C,-20 °C,-80 °C
Storage Comment:	Store frozen product at or below -20°C. Thawed product may be stored for 2-4 weeks at 4°C. For optimal storage, aliquot to smaller portions and store at -20°C to -70°C. Avoid freeze-thaw cycles.



Immunohistochemistry (Paraffin-embedded Sections)

Image 1. Human Kidney: Formalin-Fixed, Paraffin-Embedded (FFPE). This image was taken for the unconjugated form of this product. Other forms have not been tested.