



Datasheet for ABIN2622363  
**anti-IFRD1 antibody (AA 38-87)**



[Go to Product page](#)

1 Image

### Overview

Quantity:	50 µg
Target:	IFRD1
Binding Specificity:	AA 38-87
Reactivity:	Human, Mouse, Rat, Cow, Dog, Guinea Pig, Horse, Rabbit, Monkey, Pig, Bat
Host:	Rabbit
Clonality:	Polyclonal
Conjugate:	This IFRD1 antibody is un-conjugated
Application:	Western Blotting (WB), Immunohistochemistry (IHC), Immunohistochemistry (Paraffin-embedded Sections) (IHC (p))

### Product Details

Brand:	IHC-plus™
Immunogen:	Synthetic peptide located between aa38-87 of human IFRD1 (O00458, NP_001541). Percent identity by BLAST analysis: Human, Chimpanzee, Gorilla, Gibbon, Monkey, Galago, Marmoset, Mouse, Rat, Elephant, Panda, Dog, Bovine, Bat, Rabbit, Horse, Pig, Guinea pig (100%), Opossum (85%).  Type of Immunogen: Synthetic peptide
Isotype:	IgG
Specificity:	Human IFRD1
Purification:	Immunoaffinity purified

## Target Details

---

Target: IFRD1

Alternative Name: IFRD1 / TIS7 ([IFRD1 Products](#))

Background: Name/Gene ID: IFRD1

Synonyms: IFRD1, PC4, TIS7, Pheochromocytoma cell-4, TPA induced sequence 7

Gene ID: 3475

NCBI Accession: [NP\\_001541](#)

## Application Details

---

Application Notes: Approved: IHC, IHC-P (10 µg/mL), WB

Usage: ELISA titer using peptide based assay: 1:1562500. Western Blot: Suggested dilution at 1 µg/mL in 5 % skim milk / PBS buffer, and HRP conjugated anti-Rabbit IgG should be diluted in 1:50000 - 100000 as second antibody.

Comment: Target Species of Antibody: Human

Restrictions: For Research Use only

## Handling

---

Format: Lyophilized

Reconstitution: Distilled Water.

Concentration: Lot specific

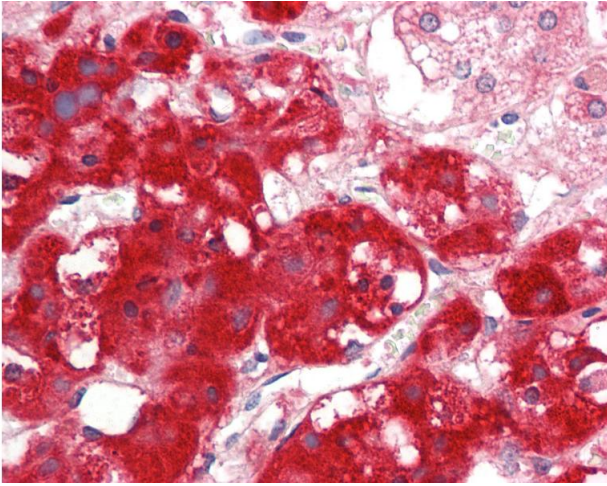
Buffer: Lyophilized from PBS with 2 % sucrose

Handling Advice: Avoid repeat freeze-thaw cycles.

Storage: 4 °C, -20 °C

Storage Comment: Long term: -20°C, the use of 50% glycerol is recommended if storing aliquots in -20°C for long term use (up to 1 year)

Short term (less than 1 week): 4°C. Avoid freeze-thaw cycles.



### Immunohistochemistry

**Image 1.** Human Adrenal: Formalin-Fixed, Paraffin-Embedded (FFPE). This image was taken for the unconjugated form of this product. Other forms have not been tested.