

Datasheet for ABIN2624403

anti-Junctophilin 2 antibody (AA 66-115)[Go to Product page](#)**1** Image

Overview

Quantity:	50 µg
Target:	Junctophilin 2 (JPH2)
Binding Specificity:	AA 66-115
Reactivity:	Human, Mouse, Rat, Cow, Dog, Rabbit, Guinea Pig, Monkey, Xenopus laevis, Bat, Chicken
Host:	Rabbit
Clonality:	Polyclonal
Conjugate:	This Junctophilin 2 antibody is un-conjugated
Application:	Western Blotting (WB), Immunohistochemistry (IHC), Immunohistochemistry (Paraffin-embedded Sections) (IHC (p))

Product Details

Brand:	IHC-plus™
Immunogen:	Synthetic peptide located between aa66-115 of mouse Jph2 (Q9ET78, NP_067541). Percent identity by BLAST analysis: Human, Gorilla, Gibbon, Monkey, Galago, Marmoset, Mouse, Rat, Elephant, Panda, Dog, Bovine, Bat, Rabbit, Opossum, Guinea pig, Turkey, Zebra finch, Chicken, Lizard, Xenopus (100%), Horse, Pig, Stickleback, Zebrafish (92%), Seabass, Nematode (84%). Type of Immunogen: Synthetic peptide
Specificity:	Mouse JPH2
Purification:	Immunoaffinity purified

Target Details

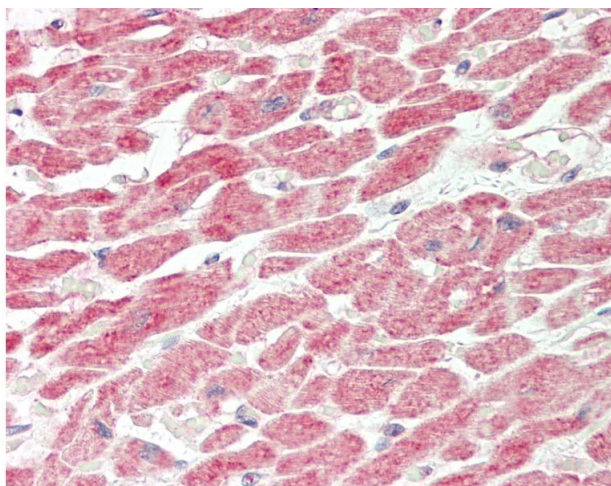
Target:	Junctophilin 2 (JPH2)
Alternative Name:	Junctophilin 2 / JPH2 (JPH2 Products)
Background:	Name/Gene ID: JPH2 Synonyms: JPH2, JP-2, JP2, Junctophilin 2, CMH17, Junctophilin type 2, Junctophilin-2
Gene ID:	57158
NCBI Accession:	NP_067541

Application Details

Application Notes:	Approved: IHC, IHC-P (10 µg/mL), WB
Comment:	Target Species of Antibody: Mouse
Restrictions:	For Research Use only

Handling

Format:	Lyophilized
Reconstitution:	Distilled water
Concentration:	Lot specific
Buffer:	Lyophilized from PBS with 2 % sucrose
Handling Advice:	Avoid repeat freeze-thaw cycles.
Storage:	4 °C,-20 °C
Storage Comment:	Long term: -20°C, the use of 50% glycerol is recommended if storing aliquots in -20°C for long term use (up to 1 year) Short term (less than 1 week): 4°C. Avoid freeze-thaw cycles.



Immunohistochemistry

Image 1. Human Heart: Formalin-Fixed, Paraffin-Embedded (FFPE). This image was taken for the unconjugated form of this product. Other forms have not been tested.