



[Go to Product page](#)

Datasheet for ABIN2625112
anti-MAP4 antibody (AA 1102-1152)

1 Image

Overview

Quantity:	50 µL
Target:	MAP4
Binding Specificity:	AA 1102-1152
Reactivity:	Human, Rat, Mouse, Horse
Host:	Rabbit
Clonality:	Polyclonal
Application:	Western Blotting (WB), Immunohistochemistry (IHC), Immunoprecipitation (IP), Immunofluorescence (IF), Immunohistochemistry (Paraffin-embedded Sections) (IHC (p))

Product Details

Brand:	IHC-plus™
Isotype:	IgG
Specificity:	Region between residue 1102 and 1152 of human microtubule-associated protein 4 using the numbering given in entry NP_002366.2 (GeneID 4134).
Purification:	Immunoaffinity purified

Target Details

Target:	MAP4
Alternative Name:	MAP4 (MAP4 Products)
Background:	Name/Gene ID: MAP4

Target Details

Synonyms: MAP4, MAP-4

Gene ID: 4134

Pathways: [p53 Signaling](#), [Microtubule Dynamics](#)

Application Details

Application Notes: Approved: IF (1:50 - 1:250), IHC, IHC-P (1:50 - 1:100), IP (2 - 5 µg/mg lysate), WB (1:2000 - 1:10000)

Usage: Immunohistochemistry: Antigen retrieval with citrate buffer pH 6.0 is recommended for FFPE tissue sections. Human controls: Breast Carcinoma, Ovarian Carcinoma, Prostate Carcinoma.

Comment: Target Species of Antibody: Human

Restrictions: For Research Use only

Handling

Format: Liquid

Concentration: Lot specific

Buffer: Tris-buffered saline, 0.1 % BSA, 0.09 % sodium azide.

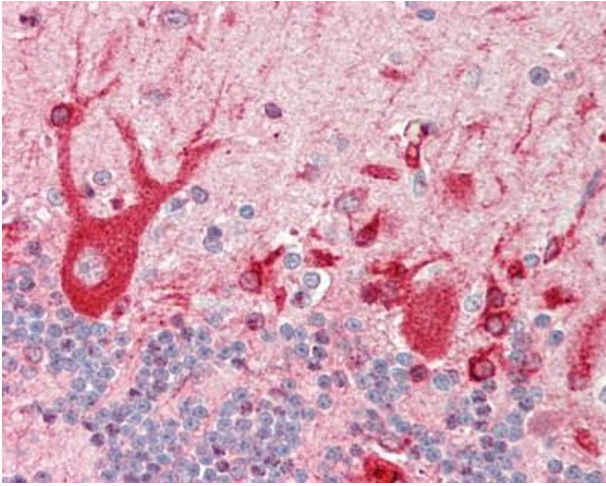
Preservative: Sodium azide

Precaution of Use: This product contains Sodium azide: a POISONOUS AND HAZARDOUS SUBSTANCE which should be handled by trained staff only.

Storage: 4 °C

Storage Comment: Store at 2-8°C for up to 1 year.

Expiry Date: 12 months



Immunohistochemistry (Paraffin-embedded Sections)

Image 1. Human Brain, Cerebellum: Formalin-Fixed, Paraffin-Embedded (FFPE)