

Datasheet for ABIN2625846

anti-MX1 antibody (AA 80-342) (FITC)[Go to Product page](#)**1** Image

Overview

Quantity:	100 µL
Target:	MX1
Binding Specificity:	AA 80-342
Reactivity:	Human
Host:	Rabbit
Clonality:	Polyclonal
Conjugate:	This MX1 antibody is conjugated to FITC
Application:	Western Blotting (WB)

Product Details

Immunogen:	Recombinant MX1 (Ser80-Leu342) expressed in E. coli.
	Type of Immunogen: Recombinant protein
Isotype:	IgG
Specificity:	Human MX1 / MX
Purification:	Affinity purified

Target Details

Target:	MX1
Alternative Name:	MX1 / MX (MX1 Products)

Target Details

Background:	Name/Gene ID: MX1 Synonyms: MX1, Interferon-induced protein p78, Myxovirus resistance protein 1, IFI-78K, IFI78, MX, MxA, Myxoma resistance protein 1
-------------	--

Gene ID:	4599
----------	------

Application Details

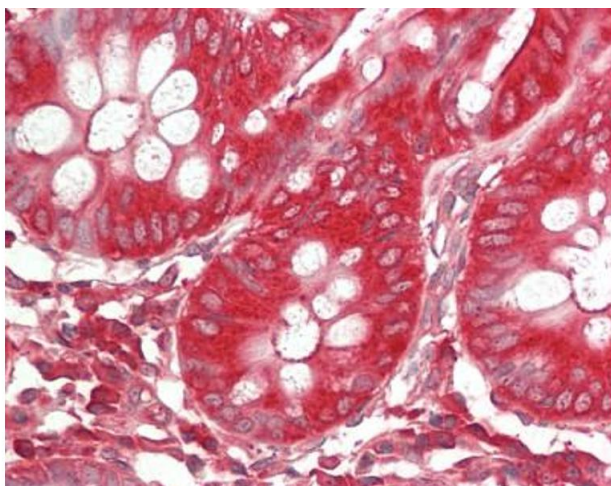
Application Notes:	Approved: WB (1:100 - 1:400) Usage: The applications listed have been tested for the unconjugated form of this product. Other forms have not been tested.
--------------------	--

Comment:	Target Species of Antibody: Human
----------	-----------------------------------

Restrictions:	For Research Use only
---------------	-----------------------

Handling

Format:	Liquid
Concentration:	Lot specific
Buffer:	PBS, pH 7.4, 0.02 % sodium azide, 50 % glycerol.
Preservative:	Sodium azide
Precaution of Use:	This product contains Sodium azide: a POISONOUS AND HAZARDOUS SUBSTANCE which should be handled by trained staff only.
Storage:	4 °C,-20 °C,-80 °C
Storage Comment:	Store frozen product at or below -20°C. Thawed product may be stored for 2-4 weeks at 4°C. For optimal storage, aliquot to smaller portions and store at -20°C to -70°C. Avoid freeze-thaw cycles.



Immunohistochemistry (Paraffin-embedded Sections)

Image 1. Human Colon: Formalin-Fixed, Paraffin-Embedded (FFPE). This image was taken for the unconjugated form of this product. Other forms have not been tested.