

Datasheet for ABIN2626156
anti-NR4A3 antibody (AA 351-400)[Go to Product page](#)

1 Image

Overview

Quantity:	50 µg
Target:	NR4A3
Binding Specificity:	AA 351-400
Reactivity:	Human, Mouse, Rat, Monkey, Rabbit, Horse, Dog, Bat, Chicken
Host:	Rabbit
Clonality:	Polyclonal
Conjugate:	This NR4A3 antibody is un-conjugated
Application:	Western Blotting (WB), Immunohistochemistry (IHC), Immunohistochemistry (Paraffin-embedded Sections) (IHC (p))

Product Details

Brand:	IHC-plus™
Immunogen:	Synthetic peptide located between aa351-400 of human NR4A3 (Q92570). Percent identity by BLAST analysis: Human, Chimpanzee, Gorilla, Gibbon, Monkey, Galago, Marmoset, Mouse, Rat, Elephant, Panda, Dog, Bat, Rabbit, Horse, Opossum, Turkey, Zebra finch, Chicken (100%), Bovine, Guinea pig, Platypus, Lizard (92%), Zebrafish (85%). Type of Immunogen: Synthetic peptide
Isotype:	IgG
Specificity:	Human NR4A3
Purification:	Immunoaffinity purified

Target Details

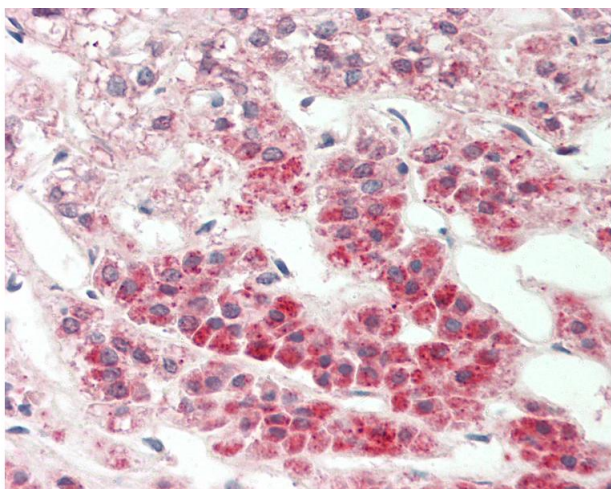
Target:	NR4A3
Alternative Name:	Nor-1 / NR4A3 (NR4A3 Products)
Background:	Name/Gene ID: NR4A3 Subfamily: NR4 Nerve growth factor-like Family: NHR Synonyms: NR4A3, CHN, MINOR, NOR1, Neuron-derived orphan receptor, Nuclear hormone receptor NOR-1, Nor-1, CSMF, Orphan receptor nor1, TEC receptor
Gene ID:	8013
Pathways:	Fc-epsilon Receptor Signaling Pathway , Nuclear Receptor Transcription Pathway , Steroid Hormone Mediated Signaling Pathway

Application Details

Application Notes:	Approved: IHC, IHC-P (10 µg/mL), WB (0.2 - 1 µg/mL) Usage: ELISA titer using peptide based assay: 1:312500. Western Blot: Suggested dilution at 0.25 µg/mL in 5 % skim milk / PBS buffer, and HRP conjugated anti-Rabbit IgG should be diluted in 1:50000 - 100000 as second antibody.
Comment:	Target Species of Antibody: Human
Restrictions:	For Research Use only

Handling

Format:	Lyophilized
Reconstitution:	Reconstitute with 50 µL sterile ddH2O.
Concentration:	Lot specific
Buffer:	Lyophilized from PBS with 2 % sucrose
Handling Advice:	Avoid repeat freeze-thaw cycles.
Storage:	4 °C, -20 °C
Storage Comment:	Long term: -20°C, the use of 50% glycerol is recommended if storing aliquots in -20°C for long term use (up to 1 year) Short term (less than 1 week): 4°C. Avoid freeze-thaw cycles.



Immunohistochemistry

Image 1. Human Adrenal: Formalin-Fixed, Paraffin-Embedded (FFPE). This image was taken for the unconjugated form of this product. Other forms have not been tested.