

Datasheet for ABIN2626810
anti-PIK3CA antibody (AA 303-631)



[Go to Product page](#)

1 Image

Overview

Quantity:	50 µL
Target:	PIK3CA
Binding Specificity:	AA 303-631
Reactivity:	Human
Host:	Mouse
Clonality:	Monoclonal
Conjugate:	This PIK3CA antibody is un-conjugated
Application:	Immunohistochemistry (IHC), Immunohistochemistry (Paraffin-embedded Sections) (IHC (p))

Product Details

Brand:	IHC-plus™
Immunogen:	Human recombinant protein fragment corresponding to amino acids 303-631 of human PIK3CA (NP_006209) produced in E. coli. Type of Immunogen: Recombinant protein
Clone:	6D9
Isotype:	IgG2a
Specificity:	Human PIK3CA / PI3K Alpha
Purification:	Immunoaffinity purified

Target Details

Target:	PIK3CA
Alternative Name:	PIK3CA / PI3K alpha (PIK3CA Products)
Background:	Name/Gene ID: PIK3CA Family: Non-Protein Kinase Synonyms: PIK3CA, MCAP, p110-alpha, p110alpha, PI3K, PI3-kinase p110 subunit alpha, PI3-kinase subunit alpha, PI3Kalpha, MCM, MCMTC, PI3K-alpha, PtdIns-3-kinase subunit alpha, CLOVE
Gene ID:	5290
NCBI Accession:	NP_006209
Pathways:	PI3K-Akt Signaling , RTK Signaling , TCR Signaling , AMPK Signaling , Interferon-gamma Pathway , TLR Signaling , Fc-epsilon Receptor Signaling Pathway , EGFR Signaling Pathway , Neurotrophin Signaling Pathway , Inositol Metabolic Process , Hepatitis C , CXCR4-mediated Signaling Events , Signaling Events mediated by VEGFR1 and VEGFR2 , Signaling of Hepatocyte Growth Factor Receptor , VEGFR1 Specific Signals , VEGF Signaling

Application Details

Application Notes:	Approved: IHC, IHC-P (10 µg/mL)
Comment:	Target Species of Antibody: Human
Restrictions:	For Research Use only

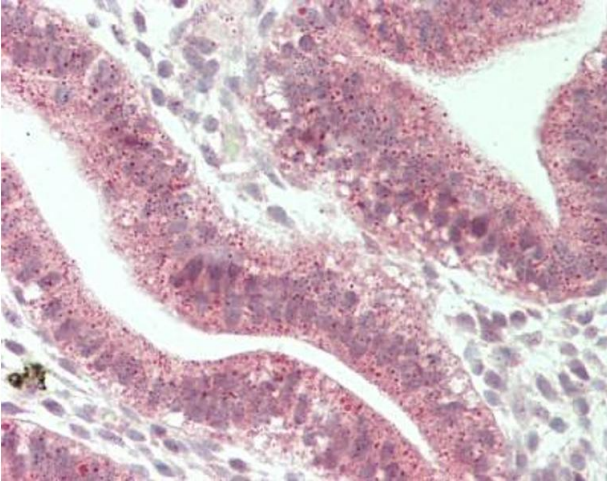
Handling

Format:	Liquid
Concentration:	Lot specific
Buffer:	PBS, pH 7.3, 1 % BSA, 50 % glycerol, 0.02 % sodium azide
Preservative:	Sodium azide
Precaution of Use:	This product contains Sodium azide: a POISONOUS AND HAZARDOUS SUBSTANCE which should be handled by trained staff only.
Handling Advice:	Minimize freezing and thawing.
Storage:	-20 °C

Handling

Storage Comment: Store at -20°C. Avoid freeze-thaw cycles.

Images



Immunohistochemistry (Paraffin-embedded Sections)

Image 1. Human Uterus: Formalin-Fixed, Paraffin-Embedded (FFPE)