

Datasheet for ABIN2627478
anti-RAC1 antibody (C-Term)



[Go to Product page](#)

1 Image

Overview

Quantity:	50 µg
Target:	RAC1
Binding Specificity:	C-Term
Reactivity:	Human, Mouse, Rat, Dog, Monkey, Zebrafish (Danio rerio), Sheep, Rabbit, Horse, Cow, Chicken, Guinea Pig, Xenopus laevis, Bat, Pig
Host:	Rabbit
Clonality:	Polyclonal
Conjugate:	This RAC1 antibody is un-conjugated
Application:	Western Blotting (WB), Immunohistochemistry (IHC), Immunohistochemistry (Paraffin-embedded Sections) (IHC (p))

Product Details

Brand:	IHC-plus™
Immunogen:	Synthetic peptide from C-Terminus of human RAC1 (P60763, NP_008839). Percent identity by BLAST analysis: Human, Chimpanzee, Gorilla, Gibbon, Monkey, Galago, Marmoset, Mouse, Rat, Sheep, Elephant, Panda, Dog, Bovine, Bat, Rabbit, Horse, Pig, Opossum, Guinea pig, Turkey, Zebra finch, Chicken, Platypus, Lizard, Xenopus, Trout, Seabass, Catfish, Salmon, Smelt, Stickleback, Pike, Zebrafish (100%), Sea squirt, Drosophila, Slime mold, Nematode, Beetle (92%). Type of Immunogen: Synthetic peptide
Specificity:	Human RAC1

Product Details

Purification: Immunoaffinity purified

Target Details

Target: RAC1

Abstract: [RAC1 Products](#)

Background: Name/Gene ID: RAC1
Family: Ras GTPase superfamily IPR001806

Synonyms: RAC1, MIG5, p21-Rac1, Ras-like protein TC25, TC25, TC-25, Rac-1

Gene ID: 5879

NCBI Accession: [NP_008839](#)

Pathways: [WNT Signaling](#), [Regulation of Actin Filament Polymerization](#), [Cell-Cell Junction Organization](#), [Thromboxane A2 Receptor Signaling](#), [VEGF Signaling](#)

Application Details

Application Notes: Approved: IHC, IHC-P (10 µg/mL), WB (0.2 - 1 µg/mL)

Usage: Western Blot: Suggested dilution at 1 µg/mL in 5 % skim milk / PBS buffer, and HRP conjugated anti-Rabbit IgG should be diluted in 1: 50,000 - 100,000 as secondary antibody.

Comment: Target Species of Antibody: Human

Restrictions: For Research Use only

Handling

Format: Lyophilized

Reconstitution: Distilled water

Concentration: Lot specific

Buffer: Lyophilized from PBS with 2 % sucrose

Handling Advice: Avoid repeat freeze-thaw cycles.

Storage: 4 °C, -20 °C

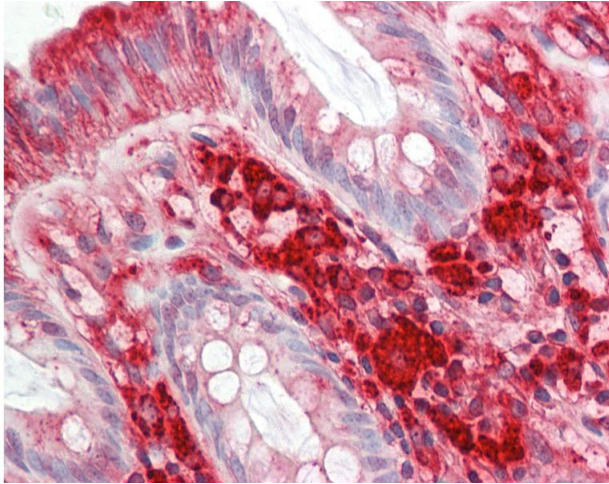
Storage Comment: Long term: -20°C, the use of 50% glycerol is recommended if storing aliquots in -20°C for long

Handling

term use (up to 1 year)

Short term (less than 1 week): 4°C. Avoid freeze-thaw cycles.

Images



Immunohistochemistry

Image 1. Human Colon: Formalin-Fixed, Paraffin-Embedded (FFPE). This image was taken for the unconjugated form of this product. Other forms have not been tested.