

Datasheet for ABIN2627865
anti-SCG3 antibody (C-Term)



[Go to Product page](#)

1 Image

Overview

Quantity:	50 µg
Target:	SCG3
Binding Specificity:	C-Term
Reactivity:	Human, Mouse, Horse, Rabbit, Zebrafish (Danio rerio), Monkey
Host:	Rabbit
Clonality:	Polyclonal
Conjugate:	This SCG3 antibody is un-conjugated
Application:	Western Blotting (WB), Immunohistochemistry (IHC), Immunohistochemistry (Paraffin-embedded Sections) (IHC (p))

Product Details

Brand:	IHC-plus™
Immunogen:	Synthetic peptide from C-Terminus of mouse Scg3 (P47867, NP_001158262). Percent identity by BLAST analysis: Human, Gorilla, Orangutan, Gibbon, Monkey, Marmoset, Mouse, Rabbit, Horse (100%), Galago, Rat, Dog, Opossum, Guinea pig (92%), Elephant, Bovine, Bat, Turkey, Chicken, Zebrafish (85%). Type of Immunogen: Synthetic peptide
Specificity:	Mouse SCG3 / Secretogranin 3
Purification:	Immunoaffinity purified

Target Details

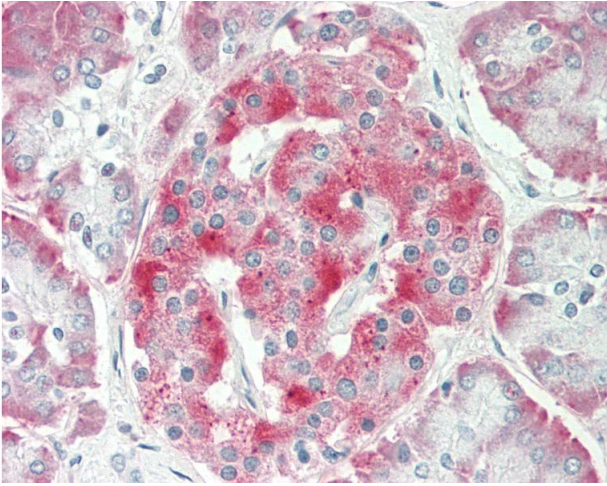
Target:	SCG3
Alternative Name:	SCG3 / Secretogranin 3 (SCG3 Products)
Background:	Name/Gene ID: SCG3 Synonyms: SCG3, Secretogranin-3, Secretogranin III, SGIII
Gene ID:	29106
NCBI Accession:	NP_001158262

Application Details

Application Notes:	Approved: IHC, IHC-P (10 µg/mL), WB (1 µg/mL)
Comment:	Target Species of Antibody: Mouse
Restrictions:	For Research Use only

Handling

Format:	Lyophilized
Reconstitution:	Distilled water
Concentration:	Lot specific
Buffer:	Lyophilized from PBS with 2 % sucrose
Handling Advice:	Avoid repeat freeze-thaw cycles.
Storage:	4 °C,-20 °C
Storage Comment:	Long term: -20°C, the use of 50% glycerol is recommended if storing aliquots in -20°C for long term use (up to 1 year) Short term (less than 1 week): 4°C. Avoid freeze-thaw cycles.



Immunohistochemistry

Image 1. Human Pancreas: Formalin-Fixed, Paraffin-Embedded (FFPE). This image was taken for the unconjugated form of this product. Other forms have not been tested.