

## Datasheet for ABIN2628415 **anti-SLC4A3 antibody (AA 36-85)**



[Go to Product page](#)

### 1 Image

#### Overview

Quantity:	50 µg
Target:	SLC4A3
Binding Specificity:	AA 36-85
Reactivity:	Rat, Human, Mouse, Cow, Dog, Guinea Pig, Horse, Bat, Monkey
Host:	Rabbit
Clonality:	Polyclonal
Conjugate:	This SLC4A3 antibody is un-conjugated
Application:	Western Blotting (WB), Immunohistochemistry (IHC), Immunohistochemistry (Paraffin-embedded Sections) (IHC (p))

#### Product Details

Brand:	IHC-plus™
Immunogen:	Synthetic peptide located between aa36-85 of human SLC4A3 (F8WD49). Percent identity by BLAST analysis: Human, Chimpanzee, Gorilla, Gibbon, Monkey, Mouse, Rat, Ferret, Dog, Bovine, Bat, Elephant, Horse, Guinea pig (100%), Rabbit (85%).  Type of Immunogen: Synthetic peptide
Specificity:	Human SLC4A3 / AE3
Purification:	Immunoaffinity purified

## Target Details

---

Target:	SLC4A3
Alternative Name:	SLC4A3 / AE3 ( <a href="#">SLC4A3 Products</a> )
Background:	Name/Gene ID: SLC4A3 Subfamily: Anion exchanger Family: Transporter  Synonyms: SLC4A3, AE 3, Anion exchange protein 3, Anion exchanger 3, neuronal, Anion exchanger isoform 3, AE3, Neuronal band 3-like protein, Anion exchanger 3, SLC2C, CAE3/BAE3
Gene ID:	6508

## Application Details

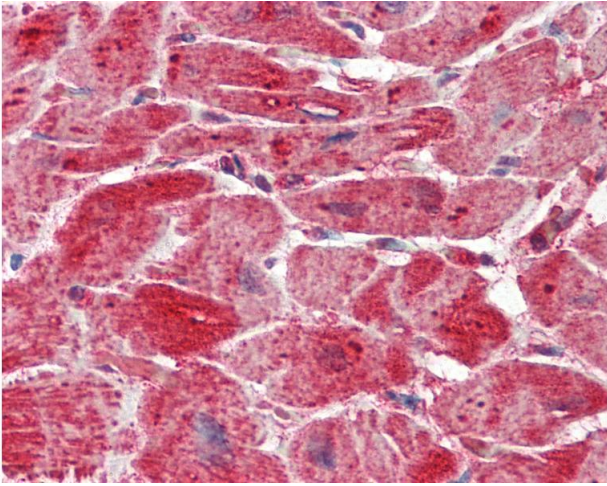
---

Application Notes:	Approved: IHC, IHC-P (5 µg/mL), WB
Comment:	Target Species of Antibody: Human
Restrictions:	For Research Use only

## Handling

---

Format:	Lyophilized
Reconstitution:	Distilled water
Concentration:	Lot specific
Buffer:	Lyophilized from PBS, 2 % sucrose.
Storage:	4 °C,-20 °C
Storage Comment:	Short term: 4°C Long term: -20°C.



### Immunohistochemistry

**Image 1.** Anti-SLC4A3 / AE3 antibody IHC staining of human heart. Immunohistochemistry of formalin-fixed, paraffin-embedded tissue after heat-induced antigen retrieval. Antibody concentration 5 ug/ml. This image was taken for the unconjugated form of this pro ...