

Datasheet for ABIN2628883  
**anti-STUB1 antibody (AA 253-303)**



[Go to Product page](#)

1 Image

## Overview

Quantity:	50 µL
Target:	STUB1
Binding Specificity:	AA 253-303
Reactivity:	Human, Mouse
Host:	Rabbit
Clonality:	Polyclonal
Conjugate:	This STUB1 antibody is un-conjugated
Application:	Immunohistochemistry (IHC), Immunohistochemistry (Paraffin-embedded Sections) (IHC (p)), Immunofluorescence (IF)

## Product Details

Brand:	IHC-plus™
Isotype:	IgG
Specificity:	Region between residue 253 and 303 of human STIP1 homology and U-box containing protein 1 (carboxy terminus of Hsp70-interacting protein) using the numbering given in entry NP_005852.2 (GeneID 10273).
Purification:	Immunoaffinity purified

## Target Details

Target:	STUB1
Alternative Name:	STUB1 / CHIP ( <a href="#">STUB1 Products</a> )

## Target Details

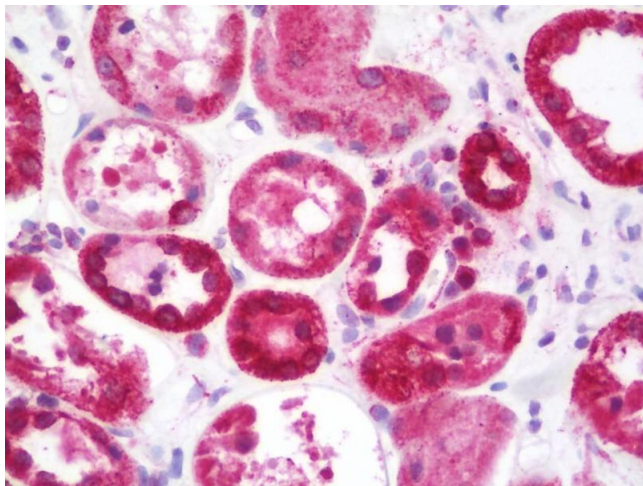
Background:	Name/Gene ID: STUB1  Synonyms: STUB1, Antigen NY-CO-7, CHIP, HSPABP2, NY-CO-7, SDCCAG7, UBOX1, CLL-associated antigen KW-8
Gene ID:	10273
Pathways:	<a href="#">Regulation of Hormone Metabolic Process</a> , <a href="#">Response to Water Deprivation</a>

## Application Details

Application Notes:	Approved: IF (1:50 - 1:500), IHC, IHC-P (1:100)  Usage: Immunohistochemistry: Antigen retrieval is recommended. Antigen retrieval with citrate buffer will enhance staining. Likely to work with frozen sections. In some cases, the antibody may be diluted further than indicated. Human controls: Breast Carcinoma, Colon Carcinoma, Ovarian Carcinoma, Prostate Carcinoma. Mouse controls: Teratoma.
Comment:	Target Species of Antibody: Human
Restrictions:	For Research Use only

## Handling

Format:	Liquid
Concentration:	Lot specific
Buffer:	Tris-buffered saline, 0.1 % BSA, 0.09 % sodium azide.
Preservative:	Sodium azide
Precaution of Use:	This product contains Sodium azide: a POISONOUS AND HAZARDOUS SUBSTANCE which should be handled by trained staff only.
Storage:	4 °C
Storage Comment:	Store at 2-8°C for up to 1 year.
Expiry Date:	12 months



#### Immunohistochemistry

**Image 1.** Anti-STUB1 / CHIP antibody IHC staining of human kidney. Immunohistochemistry of formalin-fixed, paraffin-embedded tissue after heat-induced antigen retrieval. Antibody dilution 1:100.