



[Go to Product page](#)

Datasheet for ABIN2628935

anti-TADA2L antibody (Internal Region)

1 Image

Overview

Quantity:	100 µL
Target:	TADA2L (TADA2A)
Binding Specificity:	Internal Region
Reactivity:	Human, Mouse, Rat, Monkey, Cow, Dog, Rabbit, Pig
Host:	Rabbit
Clonality:	Polyclonal
Application:	Western Blotting (WB), Immunohistochemistry (IHC), Immunofluorescence (IF), Immunocytochemistry (ICC), Immunohistochemistry (Paraffin-embedded Sections) (IHC (p))

Product Details

Immunogen:	KLH-conjugated synthetic peptide encompassing a sequence within the central region of human ADA2A. Type of Immunogen: Synthetic peptide
Specificity:	Recognizes endogenous levels of ADA2A protein.
Purification:	Immunoaffinity purified

Target Details

Target:	TADA2L (TADA2A)
Alternative Name:	TADA2L / ADA2A (TADA2A Products)
Background:	Name/Gene ID: TADA2A

Target Details

Synonyms: TADA2A, ADA2A, ADA2-like protein, ADA2, KL04P, HADA2, Transcriptional adapter 2-like, Transcriptional adaptor 2A, TADA2L

Gene ID: 6871

Pathways: [Chromatin Binding](#)

Application Details

Application Notes: Approved: ICC (1:100 - 1:500), IF, IHC, IHC-P (5 µg/mL), WB (1:500 - 1:1000)

Comment: Target Species of Antibody: Human

Restrictions: For Research Use only

Handling

Format: Liquid

Concentration: Lot specific

Buffer: PBS, pH 7.3, 0.01 % sodium azide, 30 % glycerol.

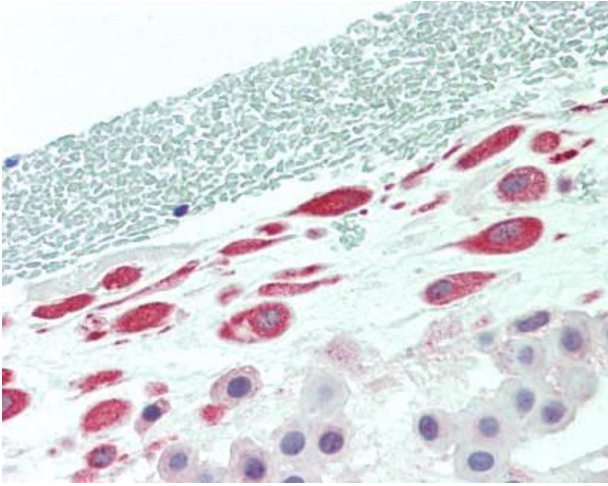
Preservative: Sodium azide

Precaution of Use: This product contains Sodium azide: a POISONOUS AND HAZARDOUS SUBSTANCE which should be handled by trained staff only.

Handling Advice: Aliquot to avoid freeze/thaw cycles.

Storage: -20 °C

Storage Comment: Store at -20°C. Aliquot to avoid freeze/thaw cycles.



Immunohistochemistry (Paraffin-embedded Sections)

Image 1. Human Placenta, Amnion: Formalin-Fixed, Paraffin-Embedded (FFPE)