

Datasheet for ABIN263146
anti-FOXP2 antibody (C-Term)[Go to Product page](#)

4 Images

5 Publications

Overview

Quantity:	100 µg
Target:	FOXP2
Binding Specificity:	C-Term
Reactivity:	Human
Host:	Goat
Clonality:	Polyclonal
Conjugate:	This FOXP2 antibody is un-conjugated
Application:	Western Blotting (WB), ELISA

Product Details

Purpose:	FOXP2 (C terminus)
Immunogen:	Peptide with sequence C-REIEEEPLSEDLE, from the C Terminus of the protein sequence according to NP_055306.1, NP_683696.2, NP_683697.1.
Sequence:	REIEEEPLSE DLE
Isotype:	IgG
Specificity:	This antibody is expected to recognise all three reported isoforms (NP_055306.1, NP_683696.2, NP_683697.1).
Cross-Reactivity:	Cow, Dog, Human, Mouse, Pig, Rat
Purification:	Purified from goat serum by ammonium sulphate precipitation followed by antigen affinity chromatography using the immunizing peptide.

Product Details

Grade: Verified

Target Details

Target: FOXP2

Alternative Name: FOXP2 ([FOXP2 Products](#))

Background: FOXP2, forkhead box P2, SPCH1, CAGH44, TNRC10, CAG repeat protein 44, speech and language disorder 1, trinucleotide repeat containing 10, forkhead/winged-helix transcription factor, DKFZp686H1726, OTTHUMP00000196932

Gene ID: 93986

NCBI Accession: [NP_055306](#), [NP_683696](#), [NP_683697](#)

Application Details

Application Notes: Western Blot: Approx 80-90 kDa band observed in Human Brain (Cerebellum) lysates (calculated MW of 82.6 kDa according to NP_683696.2). This molecular weight is routinely observed by other sources. Recommended concentration: 0.5-2 µg/mL. Primary incubation
Peptide ELISA: antibody detection limit dilution 1:128000.

Restrictions: For Research Use only

Handling

Format: Liquid

Concentration: 0.5 mg/mL

Buffer: Supplied at 0.5 mg/mL in Tris saline, 0.02 % sodium azide, pH 7.3 with 0.5 % bovine serum albumin.

Preservative: Sodium azide

Precaution of Use: This product contains Sodium azide: a POISONOUS AND HAZARDOUS SUBSTANCE which should be handled by trained staff only.

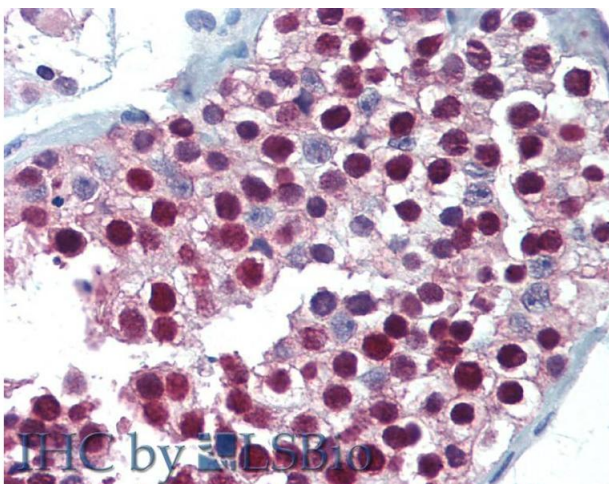
Handling Advice: Minimize freezing and thawing.

Storage: -20 °C

Storage Comment: Aliquot and store at -20°C, with minimal freeze/thawing. A working aliquot may be refrigerated at 4°C for a few weeks and still remain viable.

- Product cited in: Willett, Bayin, Lee, Krishnamurthy, Wojcinski, Lao, Stephen, Rosello-Diez, Dauber-Decker, Orvis, Wu, Tessier-Lavigne, Joyner: "Cerebellar nuclei excitatory neurons regulate developmental scaling of presynaptic Purkinje cell number and organ growth." in: **eLife**, Vol. 8, (2020) ([PubMed](#)).
- Plaas, Seppa, Reimets, Jagomäe, Toots, Koppel, Vallisoo, Nigul, Heinla, Meier, Kaasik, Piirsoo, Hickey, Terasmaa, Vasar: "Wfs1- deficient rats develop primary symptoms of Wolfram syndrome: insulin-dependent diabetes, optic nerve atrophy and medullary degeneration." in: **Scientific reports**, Vol. 7, Issue 1, pp. 10220, (2019) ([PubMed](#)).
- Haldipur, Dang, Aldinger, Janson, Guimiot, Adle-Biasette, Dobyns, Siebert, Russo, Millen: "Phenotypic outcomes in Mouse and Human Foxc1 dependent Dandy-Walker cerebellar malformation suggest shared mechanisms." in: **eLife**, Vol. 6, (2017) ([PubMed](#)).
- Fujita, Morita, Furuichi, Sugihara: "Clustered fine compartmentalization of the mouse embryonic cerebellar cortex and its rearrangement into the postnatal striped configuration." in: **The Journal of neuroscience : the official journal of the Society for Neuroscience**, Vol. 32, Issue 45, pp. 15688-703, (2012) ([PubMed](#)).
- Fujita, Sugihara: "FoxP2 expression in the cerebellum and inferior olive: development of the transverse stripe-shaped expression pattern in the mouse cerebellar cortex." in: **The Journal of comparative neurology**, Vol. 520, Issue 3, pp. 656-77, (2011) ([PubMed](#)).

Images



Immunohistochemistry

Image 1. ABIN263146 (5µg/ml) staining of paraffin embedded Human Testis. Steamed antigen retrieval with citrate buffer pH 6, AP-staining. This data is from a previous batch, not on sale.



Western Blotting

Image 2. ABIN263146 (1µg/ml) staining of Human Cerebellum lysate (35µg protein in RIPA buffer). Detected by chemiluminescence.



Image 3. ABIN263146 (0.5µg/ml) staining of human cerebellum lysate (35µg protein in RIPA buffer). Primary incubation was 1 hour. Detected by chemiluminescence.

Please check the [product details page](#) for more images. Overall 4 images are available for ABIN263146.