

Datasheet for ABIN263150
anti-EXOC7 antibody (Internal Region)[Go to Product page](#)

2 Images

Overview

Quantity:	100 µg
Target:	EXOC7
Binding Specificity:	Internal Region
Reactivity:	Human
Host:	Goat
Clonality:	Polyclonal
Conjugate:	This EXOC7 antibody is un-conjugated
Application:	Western Blotting (WB), ELISA, Immunohistochemistry (IHC)

Product Details

Purpose:	EXOC7
Immunogen:	Peptide with sequence C-DNIKNDPDKEYN, from the internal region of the protein sequence according to NP_001013861.1, NP_056034.2, NP_001138769.1, NP_001138771.1, NP_001138770.1.
Sequence:	DNIKNDPDKE YN
Isotype:	IgG
Specificity:	This antibody is expected to recognise all five reported isoforms (NP_001013861.1, NP_056034.2, NP_001138769.1, NP_001138771.1, NP_001138770.1).
Cross-Reactivity:	Cow, Human, Mouse, Pig, Rat
Purification:	Purified from goat serum by ammonium sulphate precipitation followed by antigen affinity

Product Details

chromatography using the immunizing peptide.

Grade: Verified

Target Details

Target: EXOC7

Alternative Name: EXOC7 ([EXOC7 Products](#))

Background: EXOC7, exocyst complex component 7 , HGNC:23214, 2-5-3p, EXO70, Exo70p, YJL085W

Gene ID: 23265

NCBI Accession: [NP_001013861](#), [NP_056034](#), [NP_001138769](#), [NP_001138771](#), [NP_001138770](#)

Pathways: [Peptide Hormone Metabolism](#), [ER-Nucleus Signaling](#), [Synaptic Vesicle Exocytosis](#)

Application Details

Application Notes: Immunohistochemistry: In paraffin embedded Human Adrenal Gland shows staining of cytoplasm membranes and cytoplasm of secretory cells in the medulla . Recommended concentration, 5-10 µg/mL.

Western Blot: Approx 70 kDa band observed in Human Lung lysates (calculated MW of 74.7 kDa according to NP_056034.2). Recommended concentration: 0.5-1.5 µg/mL.

Peptide ELISA: antibody detection limit dilution 1:16000.

Restrictions: For Research Use only

Handling

Format: Liquid

Concentration: 0.5 mg/mL

Buffer: Supplied at 0.5 mg/mL in Tris saline, 0.02 % sodium azide, pH 7.3 with 0.5 % bovine serum albumin.

Preservative: Sodium azide

Precaution of Use: This product contains Sodium azide: a POISONOUS AND HAZARDOUS SUBSTANCE which should be handled by trained staff only.

Handling Advice: Minimize freezing and thawing.

Storage: -20 °C

Handling

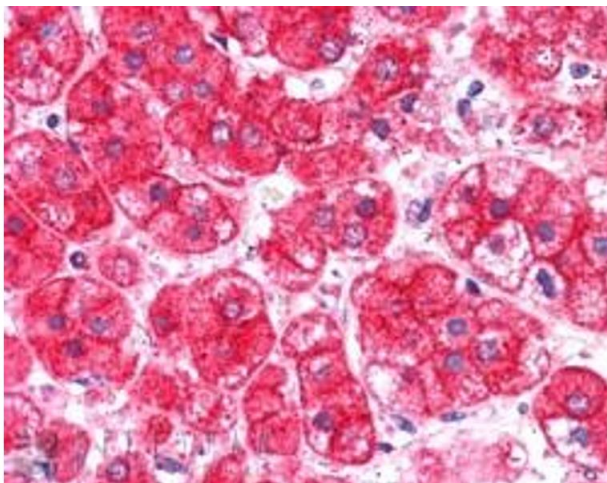
Storage Comment: Aliquot and store at -20°C, with minimal freeze/thawing. A working aliquot may be refrigerated at 4°C for a few weeks and still remain viable.

Images



Western Blotting

Image 1. ABIN263150 (0.5µg/ml) staining of Human Lung lysate (35µg protein in RIPA buffer). Primary incubation was 1 hour. Detected by chemiluminescence.



Immunohistochemistry

Image 2. ABIN263150 (0.5µg/ml) staining of paraffin embedded Human Pancreas. Steamed antigen retrieval with citrate buffer pH 6, AP-staining.