



[Go to Product page](#)

Datasheet for ABIN263156

anti-FMR1 antibody (Internal Region)

2 Images

Overview

Quantity:	100 µg
Target:	FMR1
Binding Specificity:	Internal Region
Reactivity:	Human
Host:	Goat
Clonality:	Polyclonal
Conjugate:	This FMR1 antibody is un-conjugated
Application:	Western Blotting (WB), Immunohistochemistry (IHC), ELISA

Product Details

Purpose:	FMR1
Immunogen:	Peptide with sequence C-RTGKDRNQKKEKPD, from the internal region (near the C Terminus) of the protein sequence according to NP_002015.1.
Sequence:	RTGKDRNQKK EKPD
Isotype:	IgG
Cross-Reactivity:	Dog, Human, Mouse, Rat
Purification:	Purified from goat serum by ammonium sulphate precipitation followed by antigen affinity chromatography using the immunizing peptide.
Grade:	Verified

Target Details

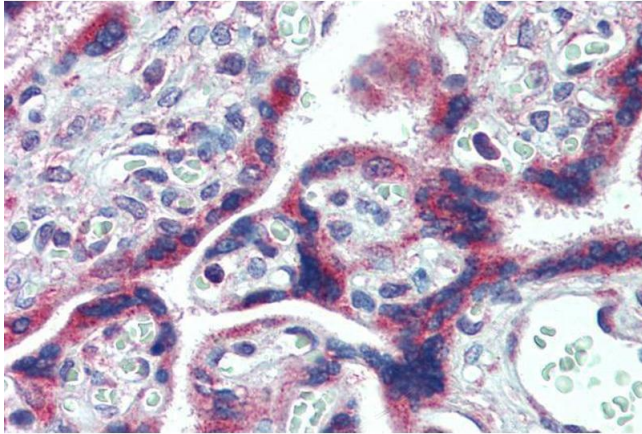
Target:	FMR1
Alternative Name:	FMR1 (FMR1 Products)
Background:	FMR1, fragile X mental retardation 1 , FMRP, FRAXA, MGC87458
Gene ID:	2332
NCBI Accession:	NP_002015
Pathways:	Regulation of Muscle Cell Differentiation, Skeletal Muscle Fiber Development

Application Details

Application Notes:	Immunohistochemistry: Paraffin embedded Human Placenta. Recommended concentration: 2.5 µg/mL. Western Blot: Approx 80 kDa band observed in lysates of cell line KELLY (calculated MW of 71.2 kDa according to NP_002015.1). The observed molecular weight corresponds to earlier findings in literature with different antibodies (Sittler et al, Hum Mol Gene Peptide ELISA: antibody detection limit dilution 1:128000.
Restrictions:	For Research Use only

Handling

Format:	Liquid
Concentration:	0.5 mg/mL
Buffer:	Supplied at 0.5 mg/mL in Tris saline, 0.02 % sodium azide, pH 7.3 with 0.5 % bovine serum albumin.
Preservative:	Sodium azide
Precaution of Use:	This product contains Sodium azide: a POISONOUS AND HAZARDOUS SUBSTANCE which should be handled by trained staff only.
Handling Advice:	Minimize freezing and thawing.
Storage:	-20 °C
Storage Comment:	Aliquot and store at -20°C, with minimal freeze/thawing. A working aliquot may be refrigerated at 4°C for a few weeks and still remain viable.



Immunohistochemistry

Image 1. ABIN263156 (2.5µg/ml) staining of paraffin embedded Human Placenta. Steamed antigen retrieval with citrate buffer pH 6, AP-staining.



Western Blotting

Image 2. ABIN263156 (0.1µg/ml) staining of KELLY cell lysate (35µg protein in RIPA buffer). Detected by chemiluminescence.