

Datasheet for ABIN263159
anti-TFEB antibody (Internal Region)



[Go to Product page](#)

1 Image

Overview

Quantity:	100 µg
Target:	TFEB
Binding Specificity:	Internal Region
Reactivity:	Human
Host:	Goat
Clonality:	Polyclonal
Conjugate:	This TFEB antibody is un-conjugated
Application:	Western Blotting (WB), ELISA

Product Details

Purpose:	TFEB (internal)
Immunogen:	Peptide with sequence C-QKDLQKSRELENH, from the internal region of the protein sequence according to NP_009093.1.
Sequence:	QKDLQKSREL ENH
Isotype:	IgG
Specificity:	This antibody is expected not to cross-react to TFE3 and MITF.
Cross-Reactivity:	Dog, Human, Mouse, Rat
Purification:	Purified from goat serum by ammonium sulphate precipitation followed by antigen affinity chromatography using the immunizing peptide.
Grade:	Verified

Target Details

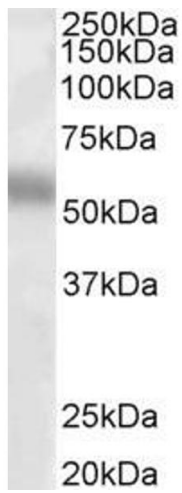
Target:	TFEB
Alternative Name:	TFEB (TFEB Products)
Background:	TFEB, transcription factor EB , AlphaTFEB, TCFEB , T-cell transcription factor EB
Gene ID:	7942, 21425, 316214
NCBI Accession:	NP_009093

Application Details

Application Notes:	Western Blot: Approx 55 kDa band observed in Human Lung lysates (calculated MW of 52.9 kDa according to NP_009093.1). Recommended concentration: 1-3 µg/mL. Peptide ELISA: antibody detection limit dilution 1:1000.
Restrictions:	For Research Use only

Handling

Format:	Liquid
Concentration:	0.5 mg/mL
Buffer:	Supplied at 0.5 mg/mL in Tris saline, 0.02 % sodium azide, pH 7.3 with 0.5 % bovine serum albumin.
Preservative:	Sodium azide
Precaution of Use:	This product contains Sodium azide: a POISONOUS AND HAZARDOUS SUBSTANCE which should be handled by trained staff only.
Handling Advice:	Minimize freezing and thawing.
Storage:	-20 °C
Storage Comment:	Aliquot and store at -20°C, with minimal freeze/thawing. A working aliquot may be refrigerated at 4°C for a few weeks and still remain viable.



Western Blotting

Image 1. ABIN263159 (1 μ g/ml) staining of Human Lung lysate (35 μ g protein in RIPA buffer). Primary incubation was 1 hour. Detected by chemiluminescence.