



[Go to Product page](#)

Datasheet for ABIN263162

## anti-DHX58 antibody (C-Term)

### 3 Images

#### Overview

Quantity:	100 µg
Target:	DHX58
Binding Specificity:	C-Term
Reactivity:	Human
Host:	Goat
Clonality:	Polyclonal
Conjugate:	This DHX58 antibody is un-conjugated
Application:	Western Blotting (WB), ELISA, Immunohistochemistry (IHC)

#### Product Details

Purpose:	LGP2
Immunogen:	Peptide with sequence DFLQHCAENLSD, from the C Terminus of the protein sequence according to NP_077024.2.
Sequence:	DFLQHCAENL SD
Isotype:	IgG
Cross-Reactivity:	Human
Purification:	Purified from goat serum by ammonium sulphate precipitation followed by antigen affinity chromatography using the immunizing peptide.
Grade:	Verified

## Target Details

---

Target:	DHX58
Alternative Name:	DHX58 ( <a href="#">DHX58 Products</a> )
Background:	DHX58, LGP2, DEXH (Asp-Glu-X-His) box polypeptide 58 , D11LGP2 , D11lgp2e , LGP2, RNA helicase LGP2 , ortholog of mouse D11lgp2
Gene ID:	79132
NCBI Accession:	<a href="#">NP_077024</a>

## Application Details

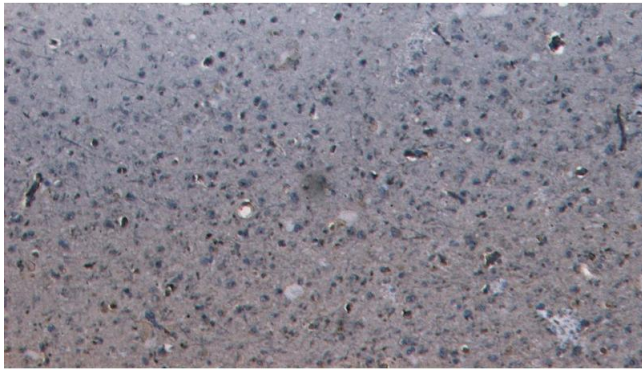
---

Application Notes:	<p>Immunohistochemistry: Paraffin embedded Human Brain (Cortex). Recommended concentration: 8 µg/mL.</p> <p>Western Blot: Approx 80 kDa band observed in Human Liver lysates (calculated MW of 76.6 kDa according to NP_077024.2). Recommended concentration: 0.3-1 µg/mL. An additional band of unknown identity was also consistently observed at 24 kDa. This band was suc</p> <p>Peptide ELISA: antibody detection limit dilution 1:8000.</p>
Restrictions:	For Research Use only

## Handling

---

Format:	Liquid
Concentration:	0.5 mg/mL
Buffer:	Supplied at 0.5 mg/mL in Tris saline, 0.02 % sodium azide, pH 7.3 with 0.5 % bovine serum albumin.
Preservative:	Sodium azide
Precaution of Use:	This product contains Sodium azide: a POISONOUS AND HAZARDOUS SUBSTANCE which should be handled by trained staff only.
Handling Advice:	Minimize freezing and thawing.
Storage:	-20 °C
Storage Comment:	Aliquot and store at -20°C, with minimal freeze/thawing. A working aliquot may be refrigerated at 4°C for a few weeks and still remain viable.

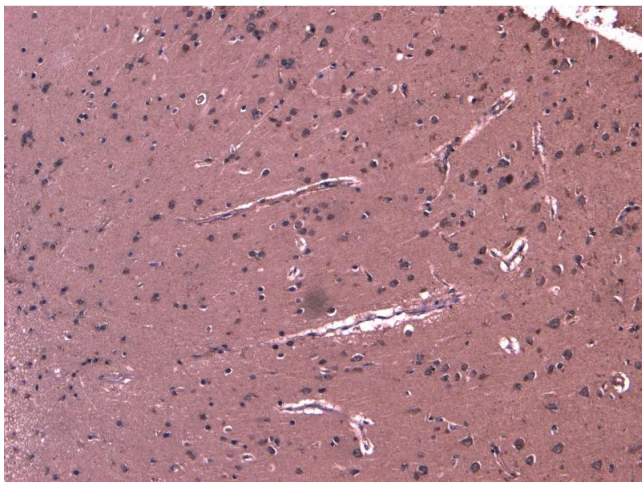


### Immunohistochemistry

**Image 1.** (ABIN263162) Negative Control showing staining of paraffin embedded Human Cortex, with no primary antibody.



**Image 2.** ABIN263162 (0.3µg/ml) staining of Human Liver lysate (35µg protein in RIPA buffer). Primary incubation was 1 hour. Detected by chemiluminescence.



### Immunohistochemistry

**Image 3.** (ABIN263162) (8 µg/mL) staining of paraffin embedded Human Cortex. Heat induced antigen retrieval with citrate buffer pH 6, HRP-staining.