

Datasheet for ABIN263165

anti-Vitamin D-Binding Protein antibody (Internal Region)[Go to Product page](#)

2 Images

1 Publication

Overview

Quantity:	100 µg
Target:	Vitamin D-Binding Protein (GC)
Binding Specificity:	Internal Region
Reactivity:	Human
Host:	Goat
Clonality:	Polyclonal
Conjugate:	This Vitamin D-Binding Protein antibody is un-conjugated
Application:	Western Blotting (WB), ELISA

Product Details

Purpose:	Vitamin D-binding protein / GC
Immunogen:	Peptide with sequence CDNLSTKNSKFED, from the internal region of the protein sequence according to NP_000574.2.
Sequence:	CDNLSTKNSK FED
Isotype:	IgG
Predicted Reactivity:	Human
Purification:	Purified from goat serum by ammonium sulphate precipitation followed by antigen affinity chromatography using the immunizing peptide.
Grade:	Verified

Target Details

Target:	Vitamin D-Binding Protein (GC)
Alternative Name:	Vitamin D-binding protein / GC (GC Products)
Background:	GC, vitamin D-binding protein, group-specific component (vitamin D binding protein), DBP, DBP/GC, VDBG, VDBP, vitamin D binding protein, vitamin D-binding alpha-globulin, vitamin D-binding protein/group specific component
Gene ID:	2638
NCBI Accession:	NP_000574
Pathways:	Metabolism of Steroid Hormones and Vitamin D , Monocarboxylic Acid Catabolic Process

Application Details

Application Notes:	DS WB Results: Approx 56 kDa band observed in Human Lung lysates (calculated MW of 52.9 kDa according to NP_000574.2). The observed molecular weight corresponds to earlier findings in literature with different antibodies (DiMartino and Kew, J Immunol. 1999 Aug 15;163(4):2135-42, PMID: 10438954). Recommended concentration: 0.1-0.3 µg/mL. Peptide ELISA: antibody detection limit dilution 1:2000.
Restrictions:	For Research Use only

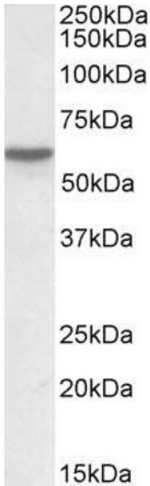
Handling

Format:	Liquid
Concentration:	0.5 mg/mL
Buffer:	Supplied at 0.5 mg/mL in Tris saline, 0.02 % sodium azide, pH 7.3 with 0.5 % bovine serum albumin.
Preservative:	Sodium azide
Precaution of Use:	This product contains Sodium azide: a POISONOUS AND HAZARDOUS SUBSTANCE which should be handled by trained staff only.
Handling Advice:	Minimize freezing and thawing.
Storage:	-20 °C
Storage Comment:	Aliquot and store at -20°C, with minimal freeze/thawing. A working aliquot may be refrigerated at 4°C for a few weeks and still remain viable.

Publications

Product cited in: Vicente-Vicente, Ferreira, González-Buitrago, López-Hernández, López-Novoa, Morales: "Increased urinary excretion of albumin, hemopexin, transferrin and VDBP correlates with chronic sensitization to gentamicin nephrotoxicity in rats." in: **Toxicology**, Vol. 304, pp. 83-91, (2013) ([PubMed](#)).

Images



Western Blotting

Image 1. ABIN263165 (0.03µg/ml) staining of Human Lung lysate (35µg protein in RIPA buffer). Primary incubation was 1 hour. Detected by chemiluminescence.



Image 2. ABIN263165 (0.2 ug/ml) staining of Liver lysate (35 ug protein in RIPA buffer). Primary incubation was 1 hour. Detected by chemiluminescence.