

Datasheet for ABIN263179

**anti-Arylsulfatase D antibody (Internal Region)**[Go to Product page](#)**1** Image

## Overview

Quantity:	100 µg
Target:	Arylsulfatase D (ARSD)
Binding Specificity:	Internal Region
Reactivity:	Human
Host:	Goat
Clonality:	Polyclonal
Conjugate:	This Arylsulfatase D antibody is un-conjugated
Application:	ELISA, Western Blotting (WB)

## Product Details

Purpose:	Arylsulfatase D
Immunogen:	C-DASNGYRALQWNA
Sequence:	DASNGYRALQ WNA
Isotype:	IgG
Specificity:	This antibody is expected to recognise both reported isoforms (NP_001660.2, NP_033667.2)
Cross-Reactivity:	Human
Purification:	Purified from goat serum by ammonium sulphate precipitation followed by antigen affinity chromatography using the immunizing peptide.
Grade:	Verified

## Target Details

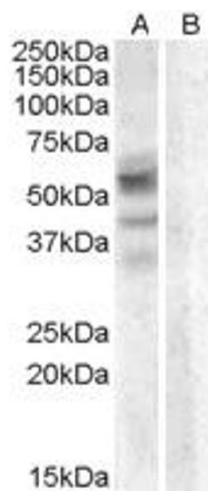
Target:	Arylsulfatase D (ARSD)
Alternative Name:	ARSD ( <a href="#">ARSD Products</a> )
Background:	Arylsulfatase D, ARSD
Gene ID:	414
NCBI Accession:	<a href="#">NP_001660</a> , <a href="#">NP_033667</a>

## Application Details

Application Notes:	Western Blot: Approx 60+40 kDa bands observed in lysates of cell lines A549 and HepG2 (calculated MW of 64.9 kDa according to NP_001660.2 and of 42.3 according to NP_033667.2). Recommended concentration: 0.3-1 µg/mL. An additional band of unknown identity Peptide ELISA: antibody detection limit dilution 1:16000.
Restrictions:	For Research Use only

## Handling

Format:	Liquid
Concentration:	0.5 mg/mL
Buffer:	Supplied at 0.5 mg/mL in Tris saline, 0.02 % sodium azide, pH 7.3 with 0.5 % bovine serum albumin.
Preservative:	Sodium azide
Precaution of Use:	This product contains Sodium azide: a POISONOUS AND HAZARDOUS SUBSTANCE which should be handled by trained staff only.
Handling Advice:	Minimize freezing and thawing.
Storage:	-20 °C
Storage Comment:	Aliquot and store at -20°C, with minimal freeze/thawing. A working aliquot may be refrigerated at 4°C for a few weeks and still remain viable.



**Image 1.** ABIN263179 (0.3µg/ml) staining of A459 lysate (35µg protein in RIPA buffer) with (B) and without (A) blocking with the immunising peptide. Primary incubation was 1 hour. Detected by chemiluminescence.