



[Go to Product page](#)

Datasheet for ABIN263182
anti-TRIB1 antibody (C-Term)

1 Image

Overview

Quantity:	100 µg
Target:	TRIB1
Binding Specificity:	C-Term
Reactivity:	Human
Host:	Goat
Clonality:	Polyclonal
Conjugate:	This TRIB1 antibody is un-conjugated
Application:	ELISA, Immunohistochemistry (IHC)

Product Details

Purpose:	TRIB1
Immunogen:	Peptide with sequence C-TSDQIVPEYQEDSD, from the C Terminus of the protein sequence according to NP_079471.1 .
Sequence:	TSDQIVPEYQ EDSD
Isotype:	IgG
Cross-Reactivity:	Cow, Human, Mouse
Purification:	Purified from goat serum by ammonium sulphate precipitation followed by antigen affinity chromatography using the immunizing peptide.
Grade:	Verified

Target Details

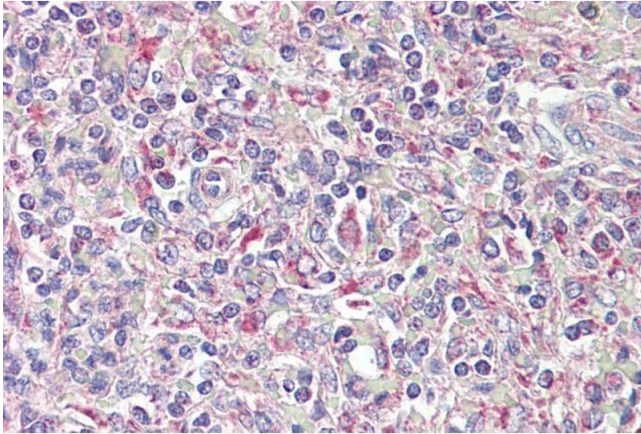
Target:	TRIB1
Alternative Name:	TRIB1 (TRIB1 Products)
Background:	TRIB1 , tribbles homolog 1 (Drosophila) , C8FW, GIG2N: SKIP1, G-protein-coupled receptor induced protein, phosphoprotein regulated by mitogenic pathways
Gene ID:	10221
NCBI Accession:	NP_079471
Pathways:	Smooth Muscle Cell Migration

Application Details

Application Notes:	Immunohistochemistry: Paraffin embedded Human Spleen. Recommended concentration: 3.75 µg/mL. Western Blot: Preliminary experiments gave an approx 35 kDa band in Human Lymph Node and Peripheral Blood Mononucleocyte lysates after 0.3 µg/mL antibody staining. Please note that currently we cannot find an explanation in the literature for the band we o Peptide ELISA: antibody detection limit dilution 1:8000.
Restrictions:	For Research Use only

Handling

Format:	Liquid
Concentration:	0.5 mg/mL
Buffer:	Supplied at 0.5 mg/mL in Tris saline, 0.02 % sodium azide, pH 7.3 with 0.5 % bovine serum albumin.
Preservative:	Sodium azide
Precaution of Use:	This product contains Sodium azide: a POISONOUS AND HAZARDOUS SUBSTANCE which should be handled by trained staff only.
Handling Advice:	Minimize freezing and thawing.
Storage:	-20 °C
Storage Comment:	Aliquot and store at -20°C, with minimal freeze/thawing. A working aliquot may be refrigerated at 4°C for a few weeks and still remain viable.



Immunohistochemistry

Image 1. ABIN263182 (3.75µg/ml) staining of paraffin embedded Human Spleen. Steamed antigen retrieval with citrate buffer pH 6, AP-staining.