



[Go to Product page](#)

Datasheet for ABIN263191

anti-GPR142 antibody (Internal Region)

1 Image

Overview

Quantity:	100 µg
Target:	GPR142
Binding Specificity:	Internal Region
Reactivity:	Human
Host:	Goat
Clonality:	Polyclonal
Conjugate:	This GPR142 antibody is un-conjugated
Application:	Western Blotting (WB), ELISA

Product Details

Purpose:	GPR142
Immunogen:	Peptide with sequence C-DMWRDTDSPRTL D, from the internal region of the protein sequence according to NP_861455.1.
Sequence:	DMWRDTDSPR TLD
Isotype:	IgG
Cross-Reactivity:	Human
Purification:	Purified from goat serum by ammonium sulphate precipitation followed by antigen affinity chromatography using the immunizing peptide.
Grade:	Verified

Target Details

Target:	GPR142
Alternative Name:	GPR142 (GPR142 Products)
Background:	GPR142 , G protein-coupled receptor 142 , PGR2
Gene ID:	350383
NCBI Accession:	NP_861455

Application Details

Application Notes:	Western Blot: Approx 50-55 kDa band observed in Human Liver lysates (calculated MW of 51.1 kDa according to NP_861455.1). Recommended concentration: 1-3 µg/mL. Peptide ELISA: antibody detection limit dilution 1:32000.
Restrictions:	For Research Use only

Handling

Format:	Liquid
Concentration:	0.5 mg/mL
Buffer:	Supplied at 0.5 mg/mL in Tris saline, 0.02 % sodium azide, pH 7.3 with 0.5 % bovine serum albumin.
Preservative:	Sodium azide
Precaution of Use:	This product contains Sodium azide: a POISONOUS AND HAZARDOUS SUBSTANCE which should be handled by trained staff only.
Handling Advice:	Minimize freezing and thawing.
Storage:	-20 °C
Storage Comment:	Aliquot and store at -20°C, with minimal freeze/thawing. A working aliquot may be refrigerated at 4°C for a few weeks and still remain viable.

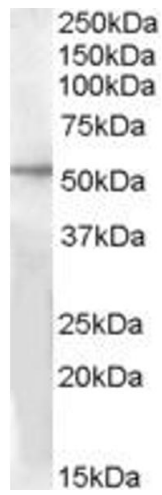


Image 1. ABIN263191 (1 μ g/ml) staining of Human Liver lysate (35 μ g protein in RIPA buffer) with (B) and without (A) blocking with the immunising peptide. Primary incubation was 1 hour. Detected by chemiluminescence.