



Datasheet for ABIN263205
anti-CTDSPL antibody (Internal Region)



[Go to Product page](#)

2 Images

Overview

Quantity:	100 µg
Target:	CTDSPL
Binding Specificity:	Internal Region
Reactivity:	Human
Host:	Goat
Clonality:	Polyclonal
Conjugate:	This CTDSPL antibody is un-conjugated
Application:	Flow Cytometry (FACS), ELISA, Immunofluorescence (IF)

Product Details

Purpose:	CTDSPL
Immunogen:	Peptide with sequence QCNVSLKKQRSRS, from the internal region of the protein sequence according to NP_001008393.1, NP_005799.2.
Sequence:	QCNVSLKKQR SRS
Isotype:	IgG
Specificity:	This antibody is expected to recognise both isoforms (NP_001008393.1, NP_005799.2).
Cross-Reactivity:	Dog, Human
Purification:	Purified from goat serum by ammonium sulphate precipitation followed by antigen affinity chromatography using the immunizing peptide.
Grade:	Verified

Target Details

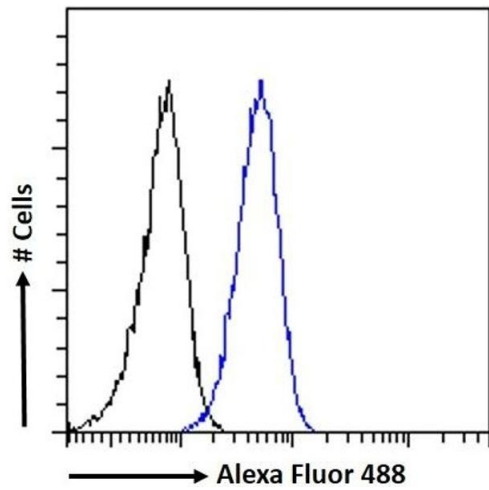
Target:	CTDSPL
Alternative Name:	CTDSPL (CTDSPL Products)
Background:	CTDSPL, CTD (carboxy-terminal domain, RNA polymerase II, polypeptide A) small phosphatase-like, C3orf8, HYA22, PSR1, RBSP3, SCP3, CTD small phosphatase-like protein, CTDSP-like, NIF-like protein, NLI-interacting factor 1, RB protein serine phosphatase fro
Gene ID:	10217
NCBI Accession:	NP_001008393 , NP_005799

Application Details

Application Notes:	Western Blot: Preliminary testing showed a band at approx 28 kDa in nuclear lysate of cell lines A431 and HeLa, after 1-2 µg/mL antibody staining (calculated Mwt of 29.9 kDa according to NP_005799.2). Primary incubation 1 hour at room temperature. Peptide ELISA: antibody detection limit dilution 1:32000.
Comment:	Immunofluorescence: Strong expression of the protein seen in the nuclei and vesicles of A431 cells. Recommended concentration: 10µg/ml. Flow Cytometry: Flow cytometric analysis of A431 cells. Recommended concentration:
Restrictions:	For Research Use only

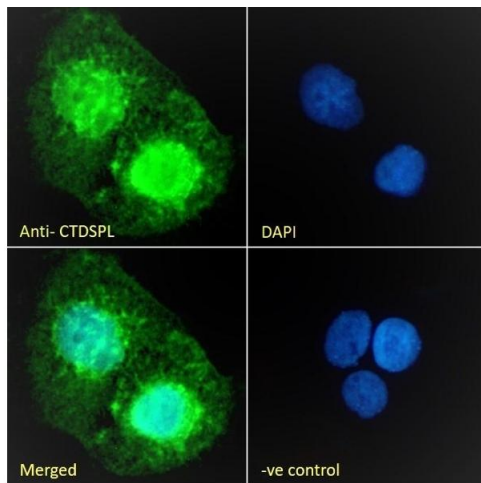
Handling

Format:	Liquid
Concentration:	0.5 mg/mL
Buffer:	Supplied at 0.5 mg/mL in Tris saline, 0.02 % sodium azide, pH 7.3 with 0.5 % bovine serum albumin.
Preservative:	Sodium azide
Precaution of Use:	This product contains Sodium azide: a POISONOUS AND HAZARDOUS SUBSTANCE which should be handled by trained staff only.
Handling Advice:	Minimize freezing and thawing.
Storage:	-20 °C
Storage Comment:	Aliquot and store at -20°C, with minimal freeze/thawing. A working aliquot may be refrigerated at 4°C for a few weeks and still remain viable.



Flow Cytometry

Image 1. (ABIN263205) Flow cytometric analysis of paraformaldehyde fixed A431 cells (blue line), permeabilized with 0.5 % Triton. Primary incubation 1hr (10 µg/mL) followed by Alexa Fluor 488 secondary antibody (1 µg/mL). IgG control: Unimmunized goat IgG (black line) followed by Alexa Fluor 488 secondary antibody.



Immunofluorescence

Image 2. (ABIN263205) Immunofluorescence analysis of paraformaldehyde fixed A431 cells, permeabilized with 0.15 % Triton. Primary incubation 1hr (10 µg/mL) followed by Alexa Fluor 488 secondary antibody (2 µg/mL), showing nuclear and vesicle staining. The nuclear stain is DAPI (blue). Negative control: Unimmunized goat IgG (10 µg/mL) followed by Alexa Fluor 488 secondary antibody (2 µg/mL).