

Datasheet for ABIN263210
anti-KPNA6 antibody (Internal Region)[Go to Product page](#)

2 Images

Overview

Quantity:	100 µg
Target:	KPNA6
Binding Specificity:	Internal Region
Reactivity:	Human
Host:	Goat
Clonality:	Polyclonal
Conjugate:	This KPNA6 antibody is un-conjugated
Application:	Western Blotting (WB), Immunohistochemistry (IHC), ELISA

Product Details

Purpose:	KPNA6
Immunogen:	Peptide with sequence C-STTGESVITREMVE, from the internal of the protein sequence according to NP_036448.1.
Sequence:	STTGESVITR EMVE
Isotype:	IgG
Cross-Reactivity:	Cow, Dog, Human, Mouse, Pig, Rat
Purification:	Purified from goat serum by ammonium sulphate precipitation followed by antigen affinity chromatography using the immunizing peptide.
Grade:	Verified

Target Details

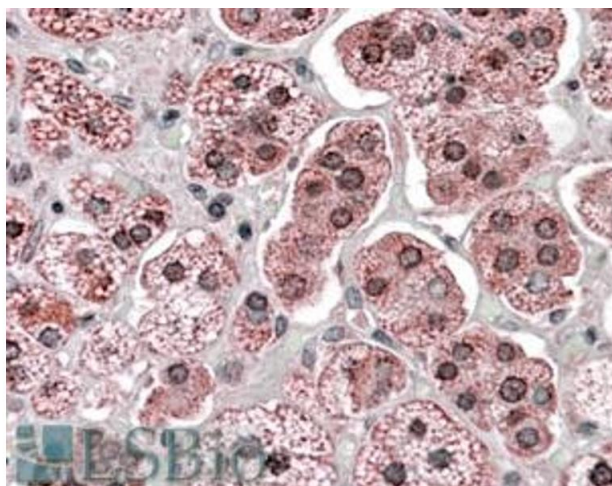
Target:	KPNA6
Alternative Name:	KPNA6 (KPNA6 Products)
Background:	KPNA6 , karyopherin alpha 6 (importin alpha 7) , FLJ11249, IPOA7, KPNA7, MGC17918, importin alpha 7 subunit, importin-alpha-S2, karyopherin alpha 6
Gene ID:	23633, 16650, 362607
NCBI Accession:	NP_036448
Pathways:	Protein targeting to Nucleus

Application Details

Application Notes:	<p>Immunohistochemistry: In paraffin embedded Human Adrenal Gland shows staining of cytoplasm and some nuclear membrane (nuclear pores). Recommended concentration, 3-6 µg/mL.</p> <p>Western Blot: Approx 60 kDa band observed in Human Skeletal Muscle lysates (calculated MW of 60.0 kDa according to NP_036448.1). Recommended concentration:0.1-0.3 µg/mL. Some minor background is detected and is blocked by the immunizing peptide. We call fo</p> <p>Peptide ELISA: antibody detection limit dilution 1:128000.</p>
Restrictions:	For Research Use only

Handling

Format:	Liquid
Concentration:	0.5 mg/mL
Buffer:	Supplied at 0.5 mg/mL in Tris saline, 0.02 % sodium azide, pH 7.3 with 0.5 % bovine serum albumin.
Preservative:	Sodium azide
Precaution of Use:	This product contains Sodium azide: a POISONOUS AND HAZARDOUS SUBSTANCE which should be handled by trained staff only.
Handling Advice:	Minimize freezing and thawing.
Storage:	-20 °C
Storage Comment:	Aliquot and store at -20°C, with minimal freeze/thawing. A working aliquot may be refrigerated at 4°C for a few weeks and still remain viable.



Immunohistochemistry

Image 1. ABIN263210 (3.8µg/ml) staining of paraffin embedded Human Adrenal Gland. Steamed antigen retrieval with citrate buffer pH 6, AP-staining.



Image 2. ABIN263210 (0.1µg/ml) staining of Human Muscle lysate (35µg protein in RIPA buffer). Primary incubation was 1 hour. Detected by chemiluminescence.