

Datasheet for ABIN263214

**anti-C-Type Lectin Domain Family 1, Member B (CLEC1B)
(Internal Region) antibody**[Go to Product page](#)**1** Image

Overview

Quantity:	100 µg
Target:	C-Type Lectin Domain Family 1, Member B (CLEC1B)
Binding Specificity:	Internal Region
Reactivity:	Human
Host:	Goat
Clonality:	Polyclonal
Conjugate:	Un-conjugated
Application:	Western Blotting (WB), ELISA

Product Details

Purpose:	CLEC2 / CLEC1B
Immunogen:	Peptide with sequence KGHKCSPCDTNWRY, from the internal region of the protein sequence according to NP_001092901.1, NP_057593.3.
Sequence:	KGHKCSPCDT NWRY
Isotype:	IgG
Specificity:	This antibody is expected to recognize both reported isoforms (NP_001092901.1, NP_057593.3)
Cross-Reactivity:	Human
Purification:	Purified from goat serum by ammonium sulphate precipitation followed by antigen affinity chromatography using the immunizing peptide.

Product Details

Grade: Verified

Target Details

Target: C-Type Lectin Domain Family 1, Member B (CLEC1B)

Alternative Name: CLEC1B ([CLEC1B Products](#))

Target Type: Viral Protein

Background: CLEC1B , CLEC2, C-type lectin domain family 1, member B , 1810061I13Rik, CLEC2B, PRO1384, QDED721, C-type lectin-like receptor-2

Gene ID: 51266

NCBI Accession: [NP_001092901](#), [NP_057593](#)

Application Details

Application Notes: Western Blot: Approx 28 kDa band observed in human bone marrow and human kidney lysates (calculated MW of 26.6 kDa according to NP_001092901.1). Recommended concentration: 1-3 µg/mL.
Peptide ELISA: antibody detection limit dilution 1:1000.

Restrictions: For Research Use only

Handling

Format: Liquid

Concentration: 0.5 mg/mL

Buffer: Supplied at 0.5 mg/mL in Tris saline, 0.02 % sodium azide, pH 7.3 with 0.5 % bovine serum albumin.

Preservative: Sodium azide

Precaution of Use: This product contains Sodium azide: a POISONOUS AND HAZARDOUS SUBSTANCE which should be handled by trained staff only.

Handling Advice: Minimize freezing and thawing.

Storage: -20 °C

Storage Comment: Aliquot and store at -20°C, with minimal freeze/thawing. A working aliquot may be refrigerated at 4°C for a few weeks and still remain viable.

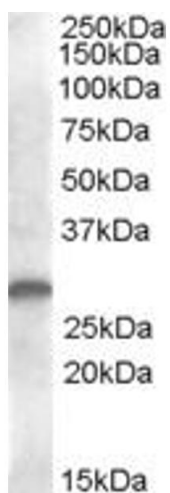


Image 1. ABIN263214 (1µg/ml) staining of human kidney lysate (35µg protein in RIPA buffer). Primary incubation was 1 hour. Detected by chemiluminescence.