



[Go to Product page](#)

Datasheet for ABIN263215  
**anti-SCP2 antibody (Internal Region)**

1 Image

Overview

Quantity:	100 µg
Target:	SCP2
Binding Specificity:	Internal Region
Reactivity:	Human
Host:	Goat
Clonality:	Polyclonal
Conjugate:	This SCP2 antibody is un-conjugated
Application:	ELISA, Immunohistochemistry (IHC)

Product Details

Purpose:	Sterol carrier protein 2
Immunogen:	Peptide with sequence C-KNHKHSVNNPYSQ, from the internal region of the protein sequence according to NP_001007099.1, NP_002970.2, NP_001180528.1, NP_001180529.1, NP_001180546.1.
Sequence:	KNHKHSVNNP YSQ
Isotype:	IgG
Specificity:	This antibody is expected to recognize isoform 1, 2, 6, 7 and 8 (NP_002970.2, NP_001007099.1, NP_001180529.1, NP_001180528.1, NP_001180546.1 respectively),
Cross-Reactivity:	Cow, Dog, Human, Mouse, Pig, Rat
Purification:	Purified from goat serum by ammonium sulphate precipitation followed by antigen affinity

## Product Details

---

chromatography using the immunizing peptide.

Grade: Verified

## Target Details

---

Target: SCP2

Alternative Name: SCP2 ([SCP2 Products](#))

Background: SCP2 , sterol carrier protein 2, DKFZp686C12188, DKFZp686D11188, NLTP, NSL-TP, SCPX, nonspecific lipid-transfer protein, sterol carrier protein X

Gene ID: 6342, 20280, 25541

NCBI Accession: [NP\\_001007099](#), [NP\\_002970](#), [NP\\_001180528](#), [NP\\_001180529](#), [NP\\_001180546](#)

Pathways: [C21-Steroid Hormone Metabolic Process](#), [Monocarboxylic Acid Catabolic Process](#)

## Application Details

---

Application Notes: Immunohistochemistry: In paraffin embedded Human Liver shows speckled cytoplasm staining in hepatocytes. Recommended concentration, 3-6 µg/mL.

Western Blot: Preliminary experiments gave an approx 50 kDa band in Human Liver lysates after 0.3 µg/mL antibody staining. Please note that currently we cannot find an explanation in the literature for the band we observe given the calculated size of 59.0

Peptide ELISA: antibody detection limit dilution 1:32000.

Restrictions: For Research Use only

## Handling

---

Format: Liquid

Concentration: 0.5 mg/mL

Buffer: Supplied at 0.5 mg/mL in Tris saline, 0.02 % sodium azide, pH 7.3 with 0.5 % bovine serum albumin.

Preservative: Sodium azide

Precaution of Use: This product contains Sodium azide: a POISONOUS AND HAZARDOUS SUBSTANCE which should be handled by trained staff only.

Handling Advice: Minimize freezing and thawing.

## Handling

---

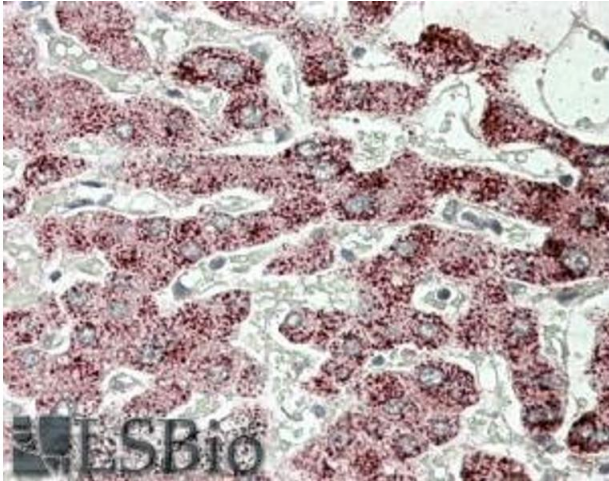
Storage: -20 °C

---

Storage Comment: Aliquot and store at -20°C, with minimal freeze/thawing. A working aliquot may be refrigerated at 4°C for a few weeks and still remain viable.

## Images

---



### Immunohistochemistry

**Image 1.** ABIN263215 (3.8µg/ml) staining of paraffin embedded Human Liver-. Steamed antigen retrieval with citrate buffer pH 6, AP-staining.