

Datasheet for ABIN263217  
**anti-XBP1 antibody (Internal Region)**[Go to Product page](#)

## 4 Images

## Overview

Quantity:	100 µg
Target:	XBP1
Binding Specificity:	Internal Region
Reactivity:	Human
Host:	Goat
Clonality:	Polyclonal
Conjugate:	This XBP1 antibody is un-conjugated
Application:	Western Blotting (WB), ELISA, Immunohistochemistry (IHC), Immunofluorescence (IF)

## Product Details

Purpose:	XBP1 / TREB5
Immunogen:	Peptide with sequence C-NHSWEDTFANELFPQ, from the internal region of the protein sequence according to NP_001073007.1.
Sequence:	NHSWEDTFAN ELFPQ
Isotype:	IgG
Specificity:	This antibody is expected to recognise isoform XBP1(S) (NP_001073007.1) only, The epitope for EB08557 is aa358-372.
Cross-Reactivity:	Dog, Human, Mouse, Rat
Purification:	Purified from goat serum by ammonium sulphate precipitation followed by antigen affinity chromatography using the immunizing peptide.

## Product Details

Grade: Verified

## Target Details

Target: XBP1

Alternative Name: XBP1 ([XBP1 Products](#))

Background: XBP1, TREB5, X-box binding protein 1 , XBP2, OTTHUMP00000028682, X-box-binding protein-1

Gene ID: 7494, 22433

NCBI Accession: [NP\\_001073007](#)

Pathways: [ER-Nucleus Signaling](#), [Unfolded Protein Response](#)

## Application Details

Application Notes: Immunohistochemistry: Paraffin embedded Human Breast. Recommended concentration: 5 µg/mL.

Western Blot: Approx 38 kDa band observed in Nuclear lysates of cell line HeLa (calculated MW of 40.1 kDa according to NP\_001073007.1). Recommended concentration: 1-3 µg/mL. Primary incubation 1 hour.at room temperature.

Peptide ELISA: antibody detection limit dilution 1:4000.

Comment: **Immunofluorescence:** Expression of the protein seen in the endoplasmic reticulum, cytoplasm and nucleus of HeLa and MCF7 cells. Recommended concentration: 10µg/ml.

Restrictions: For Research Use only

## Handling

Format: Liquid

Concentration: 0.5 mg/mL

Buffer: Supplied at 0.5 mg/mL in Tris saline, 0.02 % sodium azide, pH 7.3 with 0.5 % bovine serum albumin.

Preservative: Sodium azide

Precaution of Use: This product contains Sodium azide: a POISONOUS AND HAZARDOUS SUBSTANCE which should be handled by trained staff only.

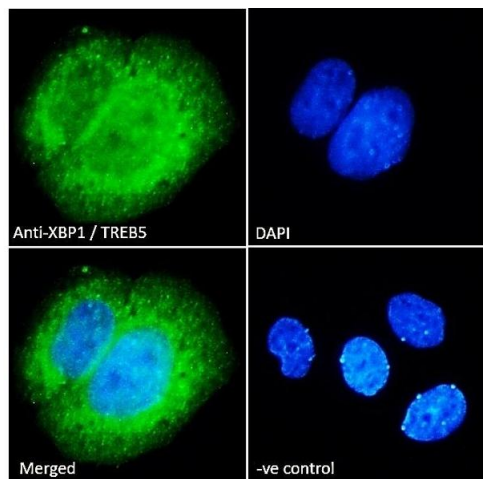
Handling Advice: Minimize freezing and thawing.

## Handling

Storage: -20 °C

Storage Comment: Aliquot and store at -20°C, with minimal freeze/thawing. A working aliquot may be refrigerated at 4°C for a few weeks and still remain viable.

## Images



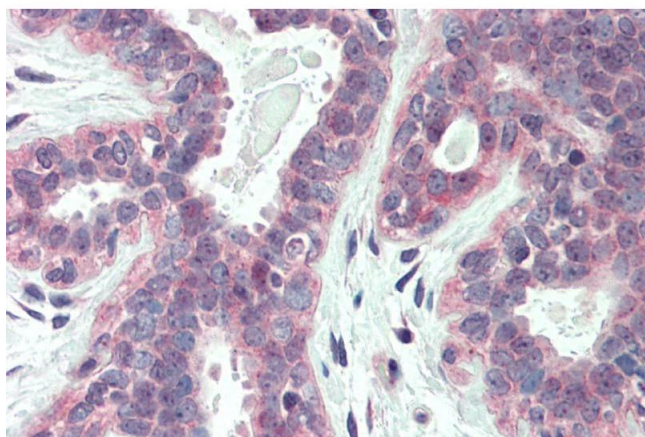
### Immunofluorescence

**Image 1.** ABIN263217 Immunofluorescence analysis of paraformaldehyde fixed MCF7 cells, permeabilized with 0.15 % Triton. Primary incubation 1hr (10 µg/mL) followed by Alexa Fluor 488 secondary antibody (2 µg/mL), showing ER, cytoplasmic and nuclear staining. The nuclear



### Western Blotting

**Image 2.** ABIN263217 (1µg/ml) staining of nuclear HeLa lysate (35µg protein in RIPA buffer). Primary incubation was 1 hour. Detected by chemiluminescence.



### Immunohistochemistry

**Image 3.** ABIN263217 (5µg/ml) staining of paraffin embedded Human Breast. Steamed antigen retrieval with citrate buffer pH 6, AP-staining.

Please check the [product details page](#) for more images. Overall 4 images are available for ABIN263217.