

Datasheet for ABIN263220  
**anti-SEL1L antibody (Internal Region)**

## 2 Images

[Go to Product page](#)

## Overview

Quantity:	100 µg
Target:	SEL1L
Binding Specificity:	Internal Region
Reactivity:	Human
Host:	Goat
Clonality:	Polyclonal
Conjugate:	This SEL1L antibody is un-conjugated
Application:	Western Blotting (WB), ELISA

## Product Details

Purpose:	SEL1L
Immunogen:	Peptide with sequence C-TAYNSYKDGDYN, from the internal region of the protein sequence according to NP_005056.3.
Sequence:	TAYNSYKDGD YN
Isotype:	IgG
Cross-Reactivity:	Cow, Dog, Human
Purification:	Purified from goat serum by ammonium sulphate precipitation followed by antigen affinity chromatography using the immunizing peptide.
Grade:	Verified

## Target Details

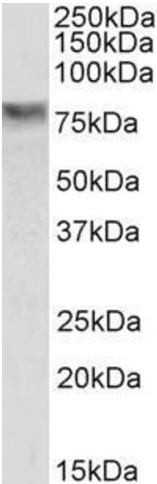
Target:	SEL1L
Alternative Name:	SEL1L ( <a href="#">SEL1L Products</a> )
Background:	SEL1L, sel-1 suppressor of lin-12-like (C. elegans), IBD2, PRO1063, SEL1-LIKE, Suppressor of lin 12 (sel-1), C. elegans, homolog of, sel-1 (suppressor of lin-12, C.elegans)-like, sel-1 suppressor of lin-12-like
Gene ID:	6400, 20338, 314352
NCBI Accession:	<a href="#">NP_005056</a>

## Application Details

Application Notes:	Western Blot: Approx 80 kDa band observed in lysates of cell line HepG2 (calculated MW of 88.8 kDa according to NP_005056.3). Recommended concentration: 1-3 µg/mL. Peptide ELISA: antibody detection limit dilution 1:1000.
Restrictions:	For Research Use only

## Handling

Format:	Liquid
Concentration:	0.5 mg/mL
Buffer:	Supplied at 0.5 mg/mL in Tris saline, 0.02 % sodium azide, pH 7.3 with 0.5 % bovine serum albumin.
Preservative:	Sodium azide
Precaution of Use:	This product contains Sodium azide: a POISONOUS AND HAZARDOUS SUBSTANCE which should be handled by trained staff only.
Handling Advice:	Minimize freezing and thawing.
Storage:	-20 °C
Storage Comment:	Aliquot and store at -20°C, with minimal freeze/thawing. A working aliquot may be refrigerated at 4°C for a few weeks and still remain viable.



**Western Blotting**

**Image 1.** ABIN263220 (0.3ug/ml) staining of HepG2 cell lysate (35µg protein in RIPA buffer). Primary incubation was 1 hour. Detected by chemiluminescence.



**Image 2.** ABIN263220 (1µg/ml) staining of HepG2 lysate (35µg protein in RIPA buffer). Primary incubation was 1 hour. Detected by chemiluminescence.