

Datasheet for ABIN263222

anti-RSPH1 antibody (Internal Region)[Go to Product page](#)**1** Image

Overview

Quantity:	100 µg
Target:	RSPH1
Binding Specificity:	Internal Region
Reactivity:	Mouse
Host:	Goat
Clonality:	Polyclonal
Conjugate:	This RSPH1 antibody is un-conjugated
Application:	Western Blotting (WB), ELISA

Product Details

Purpose:	TSGA2
Sequence:	HLNHRYQGKF LKNKP
Isotype:	IgG
Cross-Reactivity:	Cow, Human, Mouse, Rat
Purification:	Purified from goat serum by ammonium sulphate precipitation followed by antigen affinity chromatography using the immunizing peptide.
Grade:	Verified

Target Details

Target:	RSPH1
---------	-------

Target Details

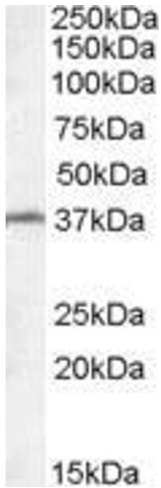
Alternative Name:	RSPH1 (RSPH1 Products)
Background:	TSGA2, RSPH1 , radial spoke head 1 homolog (Chlamydomonas) , MGC126568, MGC141927, RSP44, RSPH10A, TSA2, h-meichroacidin, male meiotic metaphase chromosome-associated acidic protein, meichroacidin, testes specific A2 homolog, testes specific gene A2 (mou
Gene ID:	89765
NCBI Accession:	NP_543136

Application Details

Application Notes:	Western Blot: Approx 37 kDa band observed in Mouse Testis lysates (calculated MW of 35.1 kDa according to Human NP_543136.1 and 34.2 kDa according to Mouse NP_079566.1). Recommended concentration: 0.1-0.3 µg/mL. Peptide ELISA: antibody detection limit dilution 1:4000.
Restrictions:	For Research Use only

Handling

Format:	Liquid
Concentration:	0.5 mg/mL
Buffer:	Supplied at 0.5 mg/mL in Tris saline, 0.02 % sodium azide, pH 7.3 with 0.5 % bovine serum albumin.
Preservative:	Sodium azide
Precaution of Use:	This product contains Sodium azide: a POISONOUS AND HAZARDOUS SUBSTANCE which should be handled by trained staff only.
Handling Advice:	Minimize freezing and thawing.
Storage:	-20 °C
Storage Comment:	Aliquot and store at -20°C, with minimal freeze/thawing. A working aliquot may be refrigerated at 4°C for a few weeks and still remain viable.



Western Blotting

Image 1. ABIN263222 (0.1µg/ml) staining of Mouse Testis lysate (35µg protein in RIPA buffer). Primary incubation was 1 hour. Detected by chemiluminescence.