



Datasheet for ABIN263228  
**anti-ABCA2 antibody (Internal Region)**



[Go to Product page](#)

1 Image

Overview

Quantity:	100 µg
Target:	ABCA2
Binding Specificity:	Internal Region
Reactivity:	Human
Host:	Goat
Clonality:	Polyclonal
Conjugate:	This ABCA2 antibody is un-conjugated
Application:	ELISA, Immunohistochemistry (IHC)

Product Details

Purpose:	ABCA2
Immunogen:	Peptide with sequence C-KKQSDNLEQQETEP, from the internal region of the protein sequence according to NP_001597.2, NP_997698.1.
Sequence:	KKQSDNLEQQ ETEP
Isotype:	IgG
Specificity:	This antibody is expected to recognize both reported isoforms (NP_001597.2, NP_997698.1).
Cross-Reactivity:	Human, Mouse, Rat
Purification:	Purified from goat serum by ammonium sulphate precipitation followed by antigen affinity chromatography using the immunizing peptide.
Grade:	Verified

## Target Details

---

Target:	ABCA2
Alternative Name:	ABCA2 ( <a href="#">ABCA2 Products</a> )
Background:	ABCA2, ATP-binding cassette, sub-family A (ABC1), member 2, ABC2, MGC129761, ATP-binding cassette, sub-family A, member 2, OTTHUMP00000064733
Gene ID:	20, 11305, 79248
NCBI Accession:	<a href="#">NP_001597</a> , <a href="#">NP_997698</a>

## Application Details

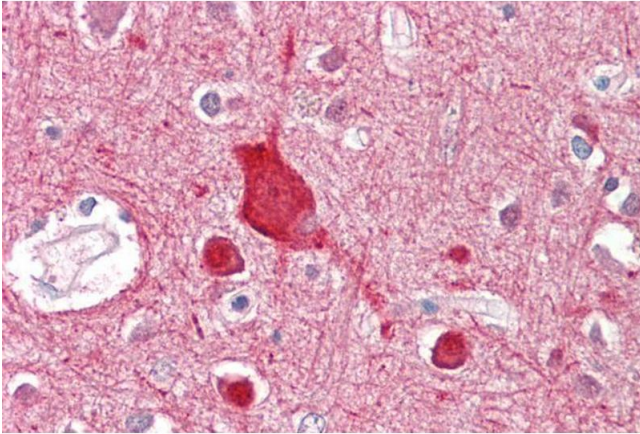
---

Application Notes:	<p>Immunohistochemistry: Paraffin embedded Human Brain (Cortex). Recommended concentration: 3.75 µg/mL.</p> <p>Western Blot: Preliminary experiments gave an approx 35 kDa band in Human Brain (Amygdala, Frontal Cortex, Hippocampus and Substantia Nigra) lysates after 0.3 µg/mL antibody staining. Please note that currently we cannot find an explanation in the literature.</p> <p>Peptide ELISA: antibody detection limit dilution 1:2000.</p>
Restrictions:	For Research Use only

## Handling

---

Format:	Liquid
Concentration:	0.5 mg/mL
Buffer:	Supplied at 0.5 mg/mL in Tris saline, 0.02 % sodium azide, pH 7.3 with 0.5 % bovine serum albumin.
Preservative:	Sodium azide
Precaution of Use:	This product contains Sodium azide: a POISONOUS AND HAZARDOUS SUBSTANCE which should be handled by trained staff only.
Handling Advice:	Minimize freezing and thawing.
Storage:	-20 °C
Storage Comment:	Aliquot and store at -20°C, with minimal freeze/thawing. A working aliquot may be refrigerated at 4°C for a few weeks and still remain viable.



### Immunohistochemistry

**Image 1.** ABIN263228 (3.75µg/ml) staining of paraffin embedded Human Cortex. Steamed antigen retrieval with citrate buffer pH 6, AP-staining.