

Datasheet for ABIN263230  
**anti-ABCA9 antibody (Internal Region)**[Go to Product page](#)

## 3 Images

## Overview

Quantity:	100 µg
Target:	ABCA9
Binding Specificity:	Internal Region
Reactivity:	Human
Host:	Goat
Clonality:	Polyclonal
Conjugate:	This ABCA9 antibody is un-conjugated
Application:	ELISA, Immunohistochemistry (IHC), Flow Cytometry (FACS)

## Product Details

Purpose:	ABCA9
Immunogen:	Peptide with sequence C-QRVVQELEMENIQD, from the internal region of the protein sequence according to NP_525022.2.
Sequence:	QRVVQELEME NIQD
Isotype:	IgG
Cross-Reactivity:	Human
Purification:	Purified from goat serum by ammonium sulphate precipitation followed by antigen affinity chromatography using the immunizing peptide.
Grade:	Verified

## Target Details

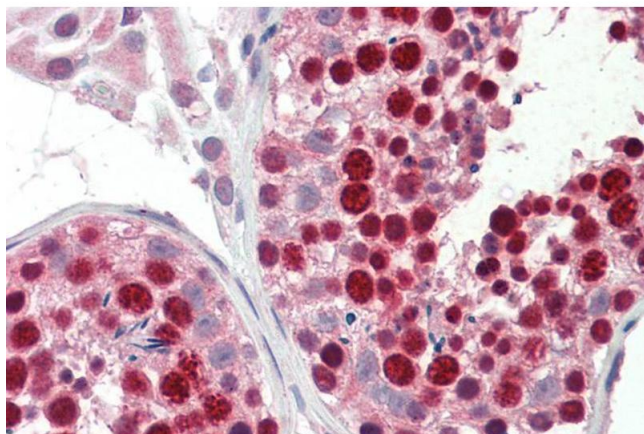
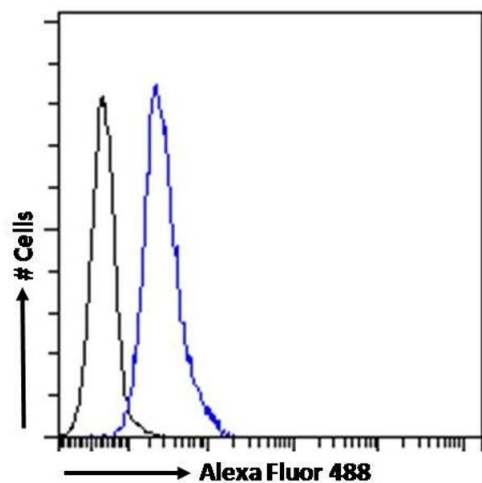
Target:	ABCA9
Alternative Name:	ABCA9 ( <a href="#">ABCA9 Products</a> )
Background:	ABCA9, ATP-binding cassette, sub-family A (ABC1), member 9, DKFZp686F2450, EST640918, MGC75415, ATP-binding cassette A9, ATP-binding cassette, sub-family A, member 9
Gene ID:	10350
NCBI Accession:	<a href="#">NP_525022</a>

## Application Details

Application Notes:	Immunohistochemistry: Paraffin embedded Human Testis. Recommended concentration: 5 µg/mL. Peptide ELISA: antibody detection limit dilution 1:128000.
Comment:	<b>Flow Cytometry:</b> Flow cytometric analysis of HEK293 cells. Recommended concentration: 10ug/ml.
Restrictions:	For Research Use only

## Handling

Format:	Liquid
Concentration:	0.5 mg/mL
Buffer:	Supplied at 0.5 mg/mL in Tris saline, 0.02 % sodium azide, pH 7.3 with 0.5 % bovine serum albumin.
Preservative:	Sodium azide
Precaution of Use:	This product contains Sodium azide: a POISONOUS AND HAZARDOUS SUBSTANCE which should be handled by trained staff only.
Handling Advice:	Minimize freezing and thawing.
Storage:	-20 °C
Storage Comment:	Aliquot and store at -20°C, with minimal freeze/thawing. A working aliquot may be refrigerated at 4°C for a few weeks and still remain viable.



### Western Blotting

**Image 1.** (ABIN263230) Flow cytometric analysis of paraformaldehyde fixed HEK293 cells (blue line), permeabilized with 0.5 % Triton. Primary incubation 1hr (10 µg/mL) followed by Alexa Fluor 488 secondary antibody (1 µg/mL). IgG control: Unimmunized goat IgG (black line) f

### Western Blotting

**Image 2.** ABIN263230 (0.1µg/ml) staining of Cerebellum lysate (35µg protein in RIPA buffer). Detected by chemiluminescence.

### Immunohistochemistry

**Image 3.** ABIN263230 (5µg/ml) staining of paraffin embedded Human Testis. Steamed antigen retrieval with citrate buffer pH 6, AP-staining.