

Datasheet for ABIN265020
anti-SH2D1A antibody



[Go to Product page](#)

1 Image

Overview

Quantity:	0.1 mg
Target:	SH2D1A
Reactivity:	Human
Host:	Rabbit
Clonality:	Polyclonal
Conjugate:	This SH2D1A antibody is un-conjugated
Application:	Western Blotting (WB), Immunoprecipitation (IP)

Product Details

Immunogen:	Full-length recombinant SAP protein
Isotype:	IgG
Specificity:	This antibody reacts to SH2D1A.
Purification:	Purified

Target Details

Target:	SH2D1A
Alternative Name:	SH2D1A (SH2D1A Products)
Background:	SLAM (Signaling Lymphocyte-Activation Molecule) is a glycosylated type-I transmembrane protein which is present on the surface of B and T cells. SLAM is a high-affinity self-ligand which, when triggered, co-activated B or T lymphocyte responses and is considered to be important in bi-directional T - B cell stimulation. SAP (SLAM-Associated Protein) has been

Target Details

determined to be a 15 kDa protein. SAP is believed to be the genetic defect which causes X-linked Lymphoproliferative Syndrome (XLP). SAP is thought to bind to SLAM by the SH2 domain of the SAP protein. Binding of SAP to the SLAM protein blocks the binding of SHP-2 to the phosphorylated SLAM protein which causes XLP. Synonyms: DSHP, Duncan disease SH2-protein, SAP, SH2 domain-containing protein 1A, SLAM-associated protein, Signaling lymphocytic activation molecule-associated protein, T-cell signal transduction molecule SAP

Gene ID:	4068
NCBI Accession:	NP_001108409
UniProt:	O60880
Pathways:	Regulation of Leukocyte Mediated Immunity , Positive Regulation of Immune Effector Process

Application Details

Application Notes:	Western Blot: 5 - 10 µg/mL. Immunoprecipitation. Other applications not tested. Optimal dilutions are dependent on conditions and should be determined by the user.
Restrictions:	For Research Use only

Handling

Buffer:	Phosphate buffered saline with 0.08 % sodium azide
Preservative:	Sodium azide
Precaution of Use:	This product contains sodium azide: a POISONOUS AND HAZARDOUS SUBSTANCE which should be handled by trained staff only.
Handling Advice:	Avoid repeated freezing and thawing.
Storage:	-20 °C
Storage Comment:	The antibody can be shipped at ambient temperature. Store (in aliquots) at -20 °C only.

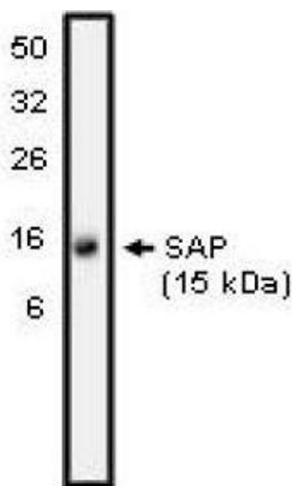


Image 1.