

Datasheet for ABIN265116

**anti-Sphingomyelin Synthase 2 antibody**[Go to Product page](#)**1** Image

## Overview

Quantity:	0.1 mg
Target:	Sphingomyelin Synthase 2 (SGMS2)
Reactivity:	Human
Host:	Rabbit
Clonality:	Polyclonal
Conjugate:	This Sphingomyelin Synthase 2 antibody is un-conjugated
Application:	Western Blotting (WB), Enzyme Immunoassay (EIA)

## Product Details

Immunogen:	Synthetic peptide derived from the human sphingomyelin synthase 2 protein.
Isotype:	IgG
Specificity:	This antibody reacts to Sphingomyelin Synthase 2.
Purification:	Purified

## Target Details

Target:	Sphingomyelin Synthase 2 (SGMS2)
Alternative Name:	SGMS2 ( <a href="#">SGMS2 Products</a> )
Background:	Sphingomyelin (SM) is a major component of animal plasma membranes. Its production involves the transfer of phosphocholine from phosphatidylcholine and then onto ceramide. This also yields diacylglycerol as a side product. The reaction is catalysed by SM synthase, an important enzyme in the regulation of diacylglycerol and ceramide as anti- and proapoptotic

## Target Details

stimuli. SM synthesis occurs in the lumen of the Golgi as well as on or at the cell surface. It is uncertain which SM enzyme forms are present at these different cellular locations. Human, mouse and Caenorhabditis elegans genomes each contain at least two different SM synthase (SMS) genes. Human SMS1 is localised to the Golgi, SMS2 resides primarily at the plasma membrane. Synonyms: SMS2, Sphingomyelin synthase 2

Gene ID:	166929
NCBI Accession:	<a href="#">NP_001129729</a>
UniProt:	<a href="#">Q8NHU3</a>

## Application Details

Application Notes:	ELISA. Western Blot: 5 - 10 µg/mL. Positive Control: Brain, heart, kidney, liver, muscle and stomach. Other applications not tested. Optimal dilutions are dependent on conditions and should be determined by the user.
Restrictions:	For Research Use only

## Handling

Buffer:	Phosphate buffered saline, pH 7.4
Handling Advice:	Avoid repeated freezing and thawing.
Storage:	-20 °C
Storage Comment:	The antibody can be shipped at ambient temperature. Store (in aliquots) at -20 °C only.

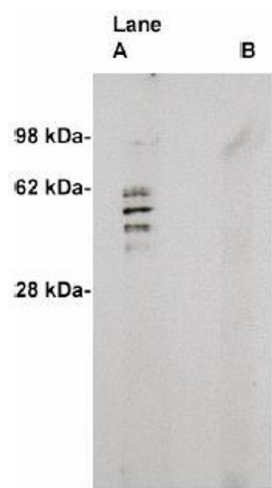


Image 1.