

Datasheet for ABIN265179
anti-SPARC antibody

2 Images



[Go to Product page](#)

Overview

Quantity:	70 µg
Target:	SPARC
Reactivity:	Human, Mouse
Host:	Rabbit
Clonality:	Polyclonal
Conjugate:	This SPARC antibody is un-conjugated
Application:	Western Blotting (WB), Immunohistochemistry (Frozen Sections) (IHC (fro)), Enzyme Immunoassay (EIA)

Product Details

Immunogen:	Synthetic peptide derived from the Human SPARC protein
Specificity:	This antibody detects Human SPARC. May cross react with SPARCL1.
Purification:	Antigen Immunoaffinity Chromatography

Target Details

Target:	SPARC
Alternative Name:	SPARC / Osteonectin (SPARC Products)
Background:	SPARC is a key factor in cell-matrix interactions and possibly tumour aggressiveness. The SPARC gene, which encodes a multifunctional glycoprotein with roles in tissue development, remodelling and fibrosis. A regulator of cell-extracellular matrix (ECM) interactions, SPARC represents a major factor in the ECM remodelling occurring during tumour invasion. <i>in silico</i>

Target Details

analysis reveals 4 UTR-SNPs located in the 3'-UTR of the SPARC gene, corresponding to 1474 g a, 1551 g c, 1922 t g and 2072 c t changes, which are significantly associated with tumoral state of the tissue. Of all hits, the 2072 SPARC polymorphism had the best association with cancer. SPARC therefore is a gene involved in a number of diseases including rheumatoid arthritis, scleroderma, tumor development and metastasis. SPARC variants have been detected in tumour samples of patients with acute myeloblastic leukemia (AML). Synonyms: BM-40, Basement-membrane protein 40, ON, Secreted protein acidic and rich in cysteine

Gene ID: 6678

NCBI Accession: [NP_003109](#)

UniProt: [P09486](#)

Pathways: [Autophagy](#)

Application Details

Application Notes: ELISA. Western Blot: 0.5-1 µg/mL. Positive control: mouse heart lysate. Immunohistochemistry.

Other applications not tested.

Optimal dilutions are dependent on conditions and should be determined by the user.

Restrictions: For Research Use only

Handling

Concentration: 1.274 mg/mL

Buffer: Phosphate buffered saline with 0.08 % Sodium Azide as preservative

Preservative: Sodium azide

Precaution of Use: This product contains sodium azide: a POISONOUS AND HAZARDOUS SUBSTANCE which should be handled by trained staff only.

Handling Advice: Avoid repeated freezing and thawing.

Storage: -20 °C

Storage Comment: Upon arrival freeze at -20 °C to -70 °C.

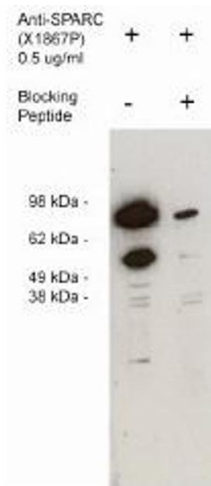


Image 1.



Image 2.