

Datasheet for ABIN265187
anti-CSAG2 antibody



[Go to Product page](#)

1 Image

Overview

Quantity:	0.1 mg
Target:	CSAG2
Reactivity:	Human
Host:	Rabbit
Clonality:	Polyclonal
Conjugate:	This CSAG2 antibody is un-conjugated
Application:	Western Blotting (WB), Enzyme Immunoassay (EIA)

Product Details

Immunogen:	Synthetic peptide derived from the human Trag-3 protein
Isotype:	IgG
Specificity:	This antibody detects Trag 3. Weakly expressed in kidney. Expressed in various tumor cell lines including carcinomas, myeloid and lymphoid malignancies, melanomas and prostate cancer. Overexpressed in taxol-resistant breast cancer line MDA 435(TR) and the doxorubicin-resistant multiple melanoma lines 8226/Dox(40).
Purification:	Purified

Target Details

Target:	CSAG2
Alternative Name:	CSAG2 (CSAG2 Products)
Background:	The expression of the cancer-testis antigen Taxol resistance-associated gene-3 (TRAG-3) is

Target Details

associated with acquired paclitaxel (Taxol) resistance, and is expressed in a variety of cancers - e.g., breast cancer, leukemia, and melanoma. Overexpressed in taxol-resistant breast cancer line MDA 435(TR) and the doxorubicin-resistant multiple myeloma lines 8226/Dox(40) and 8226/MDR(10)V. Weakly expressed in kidney. TRAG-3 is an attractive target for immunotherapy of cancer. First identified as a novel cancer/testis antigen, TRAG-3, (Taxol Resistance Associated Gene-3) was initially discovered in a search for new genes involved in drug resistance. Early studies of TRAG-3 revealed a minimal to absent expression in normal tissues and a marked over-expression in many carcinoma cell lines including several melanoma lines. By RT-PCR evaluation of TRAG-3 two transcripts are seen in many carcinoma cell lines with products in the the 799 bp and a second alternatively spliced transcript. Synonyms: CT24.2, Cancer/testis antigen 24.2, Chondrosarcoma-associated gene 2/3 protein, TRAG-3, TRAG3, Taxol-resistant-associated gene 3 protein

Gene ID: 389903

NCBI Accession: [NP_001074317](#)

UniProt: [Q9Y5P2](#)

Application Details

Application Notes: Western blot: 0.5-2 µg/mL ELISA.
Other applications not tested.
Optimal dilutions are dependent on conditions and should be determined by the user.

Restrictions: For Research Use only

Handling

Buffer: Phosphate buffered saline with 0.08 % sodium azide

Preservative: Sodium azide

Precaution of Use: This product contains sodium azide: a POISONOUS AND HAZARDOUS SUBSTANCE which should be handled by trained staff only.

Handling Advice: Avoid repeated freezing and thawing.

Storage: -20 °C

Storage Comment: Store the product (in aliquots) at -20 °C. Can be shipped at 2 - 8 °C.

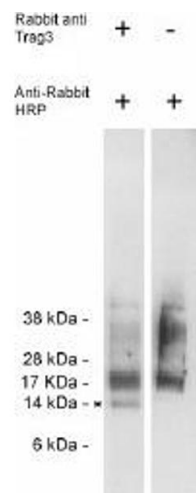


Image 1.