

Datasheet for ABIN265360  
**anti-Claudin 11 antibody**



[Go to Product page](#)

1 Image

## Overview

Quantity:	0.1 mg
Target:	Claudin 11 (CLDN11)
Reactivity:	Human, Mouse, Rat
Host:	Rabbit
Clonality:	Polyclonal
Conjugate:	This Claudin 11 antibody is un-conjugated
Application:	Western Blotting (WB), Enzyme Immunoassay (EIA)

## Product Details

Specificity:	This antibody detects endogenous levels of Claudin 11 protein. (region surrounding Ser198)
Cross-Reactivity (Details):	Species reactivity (expected):Mouse and Rat. Species reactivity (tested):Human.
Purification:	Affinity Chromatography using epitope-specific immunogen

## Target Details

Target:	Claudin 11 (CLDN11)
Alternative Name:	Claudin-11 / CLDN11 ( <a href="#">CLDN11 Products</a> )
Background:	The Claudin superfamily consists of many structurally related proteins in humans. These proteins are important structural and functional components of tight junctions in paracellular transport. Claudins are located in both epithelial and endothelial cells in all tight junction-bearing tissues. Three classes of proteins are known to localize to tight junctions, including the

## Target Details

Claudins, Occludin and junction adhesion molecule (JAM). Claudins, which consist of four transmembrane domains and two extracellular loops, make up tight junction strands. Emerging evidence suggests that the Claudin family of proteins regulates transport through tight junctions via differential discrimination for solute size and charge. Claudin expression is often highly restricted to specific regions of different tissues and may have an important role in transcellular transport through tight junctions. Synonyms: OSP, OTM, Oligodendrocyte-specific protein

Molecular Weight: approx. 24 kDa

Gene ID: 5010

NCBI Accession: [NP\\_005593](#)

UniProt: [O75508](#)

Pathways: [Hepatitis C](#)

## Application Details

Application Notes: ELISA: 1: 1000approx. 1: 10000. WB: 1: 500approx. 1: 1000.  
Other applications not tested.  
Optimal dilutions are dependent on conditions and should be determined by the user.

Restrictions: For Research Use only

## Handling

Concentration: 1.0 mg/mL

Buffer: Phosphate buffered saline (PBS), pH ~7.3, 0.05 % Sodium Azide

Preservative: Sodium azide

Precaution of Use: This product contains sodium azide: a POISONOUS AND HAZARDOUS SUBSTANCE which should be handled by trained staff only.

Handling Advice: Avoid repeated freezing and thawing.

Storage: 4 °C/-20 °C

Storage Comment: Store the antibody undiluted at 2-8 °C for one month or (in aliquots) at -20 °C for longer.

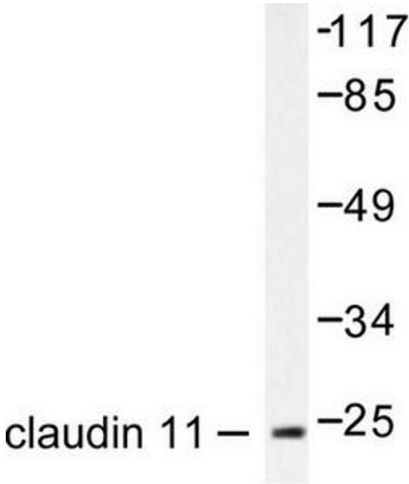


Image 1.