

Datasheet for ABIN265365  
**anti-Claudin 7 antibody**

## 2 Images

[Go to Product page](#)

## Overview

Quantity:	0.1 mg
Target:	Claudin 7 (CLDN7)
Reactivity:	Human, Mouse, Rat
Host:	Rabbit
Clonality:	Polyclonal
Conjugate:	This Claudin 7 antibody is un-conjugated
Application:	Western Blotting (WB), Immunohistochemistry (Paraffin-embedded Sections) (IHC (p)), Enzyme Immunoassay (EIA)

## Product Details

Specificity:	This antibody detects endogenous levels of Claudin 7 protein. (region surrounding Pro202)
Cross-Reactivity (Details):	Species reactivity (expected):Mouse and Rat. Species reactivity (tested):Human.
Purification:	Affinity chromatography
Purity:	> 95 % by SDS-PAGE

## Target Details

Target:	Claudin 7 (CLDN7)
Alternative Name:	Claudin-7 / CLDN7 ( <a href="#">CLDN7 Products</a> )
Background:	The Claudin superfamily consists of many structurally related proteins in humans. These proteins are important structural and functional components of tight junctions in paracellular

## Target Details

transport. Claudins are located in both epithelial and endothelial cells in all tight junction-bearing tissues. Three classes of proteins are known to localize to tight junctions, including the Claudins, Occludin and junction adhesion molecule (JAM). Claudins, which consist of four transmembrane domains and two extracellular loops, make up tight junction strands. Claudin expression is highly restricted to specific regions of different tissues and may have an important role in transcellular transport through tight junctions. mRNA studies indicate that claudin-7 is specifically expressed in mouse lung and kidney, but not in heart, brain, spleen, liver, skeletal muscle or testis. The gene encoding human claudin-7 maps to chromosome 17p13. Synonyms: CEPTL2, CLDN-7, CPETL2

Molecular Weight: approx. 23 kDa

Gene ID: 1366

NCBI Accession: [NP\\_001171951](#)

UniProt: [O95471](#)

Pathways: [Hepatitis C](#)

## Application Details

Application Notes: ELISA: 1: 20000 approx. 1: 40000. WB: 1: 500 approx. 1: 1000. IHC: 1: 50 approx. 1: 200.  
Other applications not tested.  
Optimal dilutions are dependent on conditions and should be determined by the user.

Restrictions: For Research Use only

## Handling

Concentration: 1.0 mg/mL

Buffer: Phosphate buffered saline (PBS), pH 7.2., 0.05 % sodium azide

Preservative: Sodium azide

Precaution of Use: This product contains sodium azide: a POISONOUS AND HAZARDOUS SUBSTANCE which should be handled by trained staff only.

Handling Advice: Avoid repeated freezing and thawing.

Storage: 4 °C/-20 °C

Storage Comment: Store the antibody undiluted at 2-8 °C for one month or (in aliquots) at -20 °C for longer.

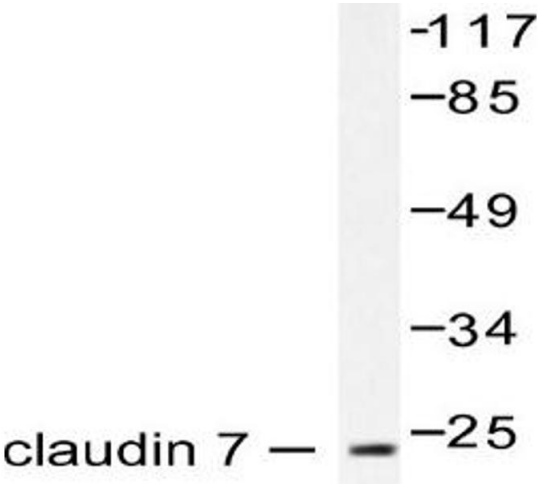


Image 1.

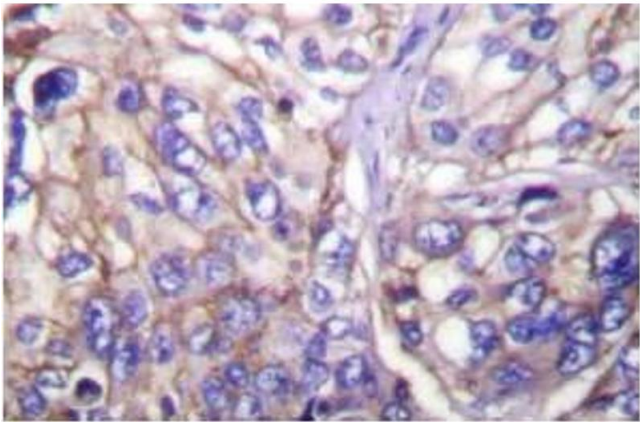


Image 2.