

Datasheet for ABIN265370  
**anti-PTGS1 antibody (pSer585)**



[Go to Product page](#)

2 Images

## Overview

Quantity:	0.1 mg
Target:	PTGS1
Binding Specificity:	pSer585
Reactivity:	Human
Host:	Rabbit
Clonality:	Polyclonal
Conjugate:	This PTGS1 antibody is un-conjugated
Application:	Western Blotting (WB), Immunohistochemistry (Paraffin-embedded Sections) (IHC (p))

## Product Details

Specificity:	This antibody detects endogenous levels of Cox1/PGHS1 protein (region surrounding Ser585).
Cross-Reactivity (Details):	Species reactivity (expected): Mouse and Rat. Species reactivity (tested): Human.
Purification:	The antibody was affinity-purified from rabbit antiserum by affinity chromatography using epitope-specific immunogen
Purity:	> 95 % pure by SDS-PAGE

## Target Details

Target:	PTGS1
Alternative Name:	Cyclooxygenase 1 ( <a href="#">PTGS1 Products</a> )

## Target Details

Background:	Cytochrome c oxidase subunit I, COX1 (also designated COI, MTCO2 or oxidative phosphorylation (OxPhos) Complex IV, subunit I) is one of three mitochondrial DNA (mtDNA) encoded subunits (MTCO1-3) of respiratory Complex IV. Cytochrome c oxidase is a hetero-oligomeric enzyme composed of 13 subunits localized to the mitochondrial inner membrane and is the terminal enzyme complex of the electron transport chain. Complex IV catalyzes the reduction of molecular oxygen to water. The energy released is used to transport protons across the mitochondrial inner membrane. The resulting electrochemical gradient is necessary for the synthesis of ATP. Complex IV contains 13 polypeptides, COX1, COX2 and COX3 (MTCO1-3) make up the catalytic core and are encoded by mtDNA while subunits IV, Va, Vb, VIa, VIb, VIc, VIIa, VIIb, VIIc and VIII are nuclear-encoded.Synonyms: COX-1, COX1, Cyclooxygenase-1, PGH synthase 1, PGHS-1, PTGS1, Prostaglandin G/H synthase 1, Prostaglandin H2 synthase 1, Prostaglandin-endoperoxide synthase 1
Molecular Weight:	approx. 70 kDa
Gene ID:	5742
NCBI Accession:	<a href="#">NP_000953</a>
UniProt:	<a href="#">P23219</a>

## Application Details

Application Notes:	ELISA: 1: 40000approx. 1: 60000. WB: 1: 500approx. 1: 1000. IHC: 1: 50approx. 1: 200. Other applications not tested. Optimal dilutions are dependent on conditions and should be determined by the user.
Restrictions:	For Research Use only

## Handling

Concentration:	1.0 mg/mL
Buffer:	Phosphate buffered saline (PBS), pH 7.2., 0.05 % Sodium azide
Preservative:	Sodium azide
Precaution of Use:	This product contains sodium azide: a POISONOUS AND HAZARDOUS SUBSTANCE which should be handled by trained staff only.
Handling Advice:	Avoid repeated freezing and thawing.
Storage:	4 °C/-20 °C

Handling

Storage Comment: Store undiluted at 2-8 °C for one month or (in aliquots) at -20 °C for longer.

Images

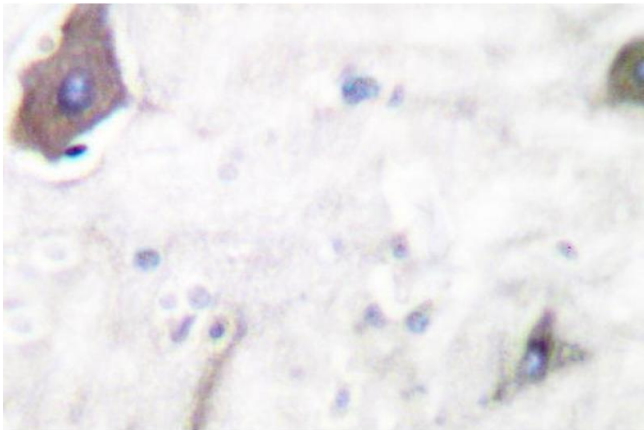


Image 1.

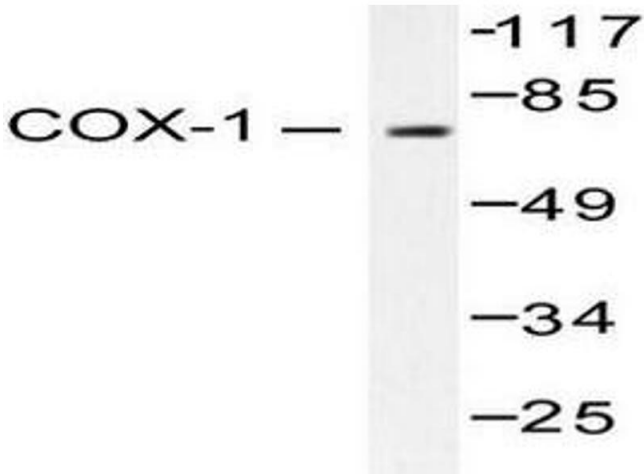


Image 2.