

Datasheet for ABIN265378
anti-Cyclin A1 antibody



[Go to Product page](#)

2 Images

Overview

Quantity:	0.1 mg
Target:	Cyclin A1 (CCNA1)
Reactivity:	Human, Mouse, Rat
Host:	Rabbit
Clonality:	Polyclonal
Conjugate:	This Cyclin A1 antibody is un-conjugated
Application:	Western Blotting (WB), Immunohistochemistry (Paraffin-embedded Sections) (IHC (p)), Enzyme Immunoassay (EIA)

Product Details

Specificity:	The antibody detects endogenous levels of Cyclin A1 protein(region surrounding Arg436).
Cross-Reactivity (Details):	Species reactivity (expected):Mouse and Rat. Species reactivity (tested):Human.
Purification:	The antibody was purified from rabbit antiserum by affinity chromatography using epitope-specific immunogen
Purity:	> 95 % pure by SDS-PAGE

Target Details

Target:	Cyclin A1 (CCNA1)
Alternative Name:	Cyclin A1 (CCNA1 Products)
Background:	Cyclin A accumulates prior to cyclin B in the cell cycle, appears to be involved in control of S

Target Details

phase and has been shown to associate with cyclin-dependent kinase-2 (Cdk2). In addition, cyclin A has been implicated in cell transformation and is found in complexes with E1A, transcription factors DRTF1 and E2F and retinoblastoma protein, p110. A second form of cyclin A, named cyclin A1 because of its high sequence homology to Xenopus cyclin A1, is most highly expressed in germ cells. It has been proposed that cyclin A1 can associate with Cdk2, p39 and Cdc2 p34. Synonyms: CCNA1, Cyclin-A1

Molecular Weight: approx. 52 kDa

Gene ID: 8900

NCBI Accession: [NP_001104515](#)

UniProt: [P78396](#)

Pathways: [Apoptosis](#), [Cell Division Cycle](#), [AMPK Signaling](#), [Mitotic G1-G1/S Phases](#), [DNA Replication](#), [M Phase](#), [Synthesis of DNA](#)

Application Details

Application Notes: ELISA: 1: 40000 approx. 1: 60000. WB: 1: 500 approx. 1: 1000. IHC: 1: 50 approx. 1: 200.
Other applications not tested.
Optimal dilutions are dependent on conditions and should be determined by the user.

Restrictions: For Research Use only

Handling

Concentration: 1.0 mg/mL

Buffer: Phosphate buffered saline (PBS), pH 7.2., 0.05 % Sodium azide

Preservative: Sodium azide

Precaution of Use: This product contains sodium azide: a POISONOUS AND HAZARDOUS SUBSTANCE which should be handled by trained staff only.

Handling Advice: Avoid repeated freezing and thawing.

Storage: 4 °C/-20 °C

Storage Comment: Store the antibody undiluted at 2-8 °C for one month or (in aliquots) at -20 °C for longer.

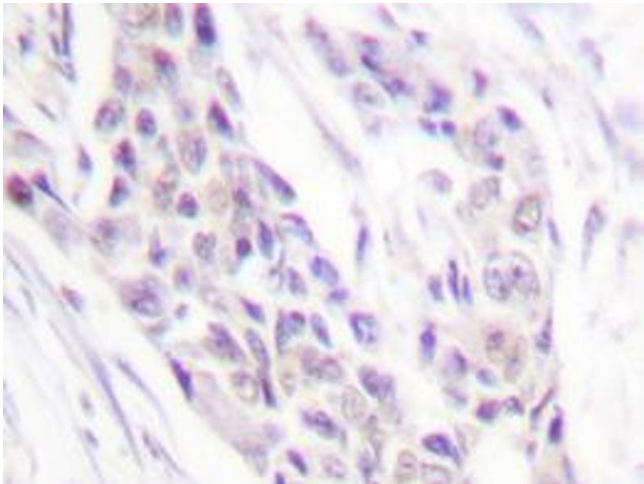


Image 1.

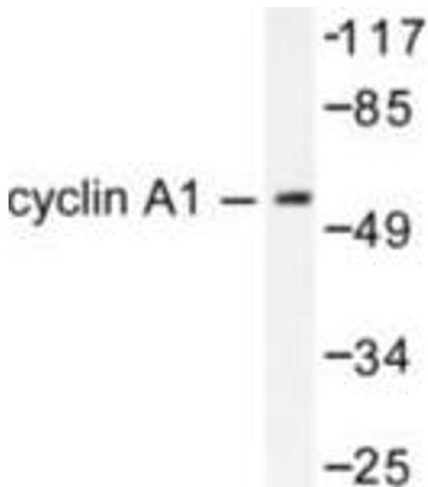


Image 2.