

Datasheet for ABIN265381

**anti-Cyclin F antibody****2** Images[Go to Product page](#)

## Overview

Quantity:	0.1 mg
Target:	Cyclin F (CCNF)
Reactivity:	Human
Host:	Rabbit
Clonality:	Polyclonal
Conjugate:	This Cyclin F antibody is un-conjugated
Application:	Western Blotting (WB), Immunohistochemistry (Paraffin-embedded Sections) (IHC (p)), Enzyme Immunoassay (EIA)

## Product Details

Specificity:	This antibody detects endogenous levels of Cyclin F protein (region surrounding Ile772).
Cross-Reactivity (Details):	Species reactivity (expected): Mouse and Rat. Species reactivity (tested): Human.
Purification:	The antibody was affinity-purified from rabbit antiserum by affinity chromatography using epitope-specific immunogen
Purity:	> 95 % pure by SDS-PAGE

## Target Details

Target:	Cyclin F (CCNF)
Alternative Name:	Cyclin F ( <a href="#">CCNF Products</a> )
Background:	Cyclins were first identified in invertebrates as proteins that oscillate dramatically through the

## Target Details

cell cycle. These proteins have been well conserved through evolution and play a critical role in regulation of cell division. cyclin E, along with the three cyclin D proteins and cyclin C, has been shown to represent a putative G1 cyclin on the basis of its cyclic pattern of mRNA expression, with maximal levels being detected near the G1/S boundary. cyclin E has been found to be associated with the transcription factor E2F in a temporally regulated manner. The cyclin E/E2F complex is detected primarily during the G1 phase of the cell cycle and decreases as cells enter S phase. E2F is known to be a critical transcription factor for expression of several S phase specific proteins. Synonyms: CCNF, Cyclin-F, G2/mitotic-specific cyclin-F

Molecular Weight: approx. 88 kDa

Gene ID: 899

NCBI Accession: [NP\\_001752](#)

UniProt: [P41002](#)

## Application Details

Application Notes: ELISA: 1: 10000approx. 1: 20000. WB: 1: 500approx. 1: 1000. IHC: 1: 50approx. 1: 200.  
Other applications not tested.  
Optimal dilutions are dependent on conditions and should be determined by the user.

Restrictions: For Research Use only

## Handling

Concentration: 1.0 mg/mL

Buffer: Phosphate buffered saline (PBS), pH 7.2., 0.05 % Sodium azide

Preservative: Sodium azide

Precaution of Use: This product contains sodium azide: a POISONOUS AND HAZARDOUS SUBSTANCE which should be handled by trained staff only.

Handling Advice: Avoid repeated freezing and thawing.

Storage: 4 °C/-20 °C

Storage Comment: Store undiluted at 2-8 °C for one month or (in aliquots) at -20 °C for longer.

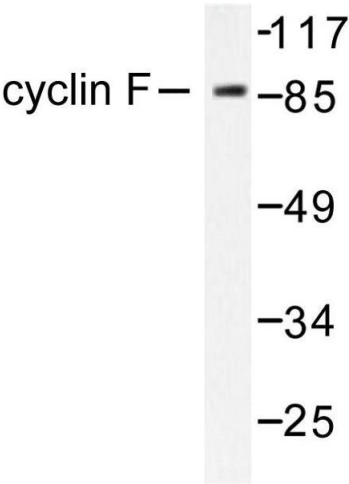


Image 1.

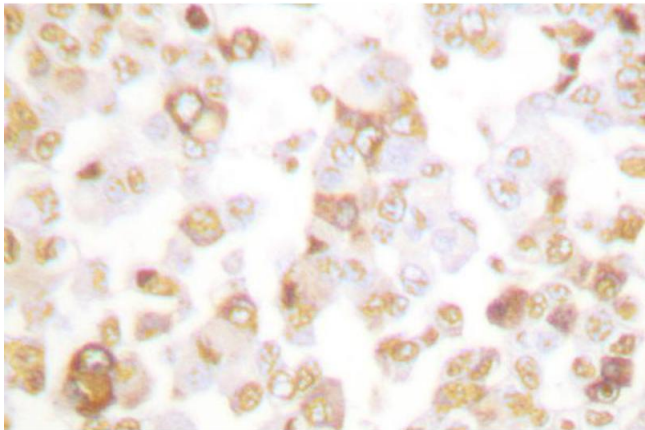


Image 2.